


# Ad-Aware

## FIRST - TIME USERS

If you have **never** run Ad-Aware (no  icon on desktop), begin by clicking on Start > Run

in the Open command box type in the following  
\\tesla  
hit Enter

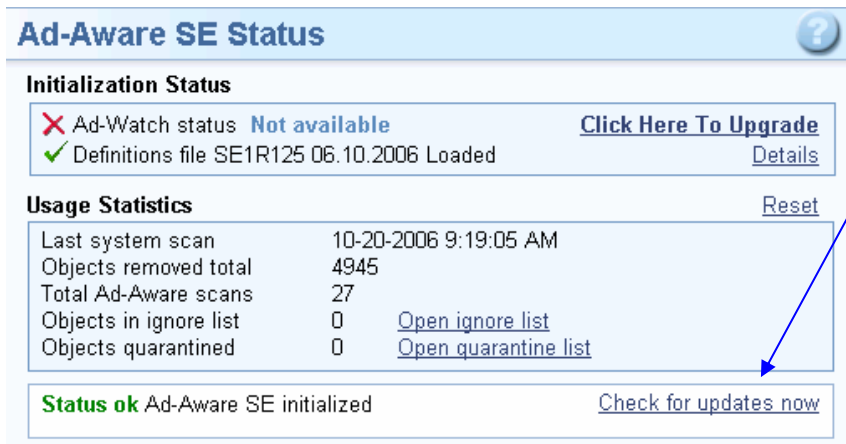
Double click on the folder - **NetAdmin**, then **PC Support**, and finally **Adaware**

Double click on file to run



This will start the wizard. Let this run on your hard drive. Ad-Aware will automatically update, and start to scan. Skip next section, continue with Scan Complete, on next page.

## RUNNING AD-AWARE FROM YOUR DESKTOP



Double click the Ad-Aware  icon.

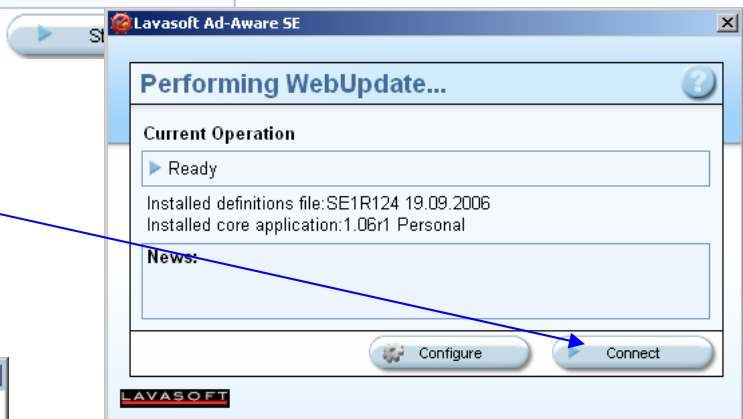
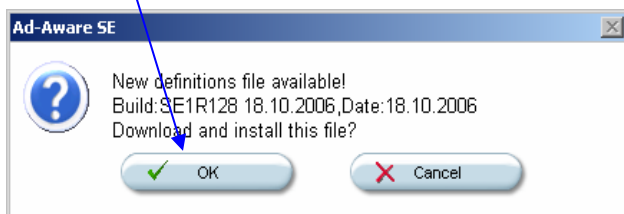
Click on **Check for updates now** before starting Ad-Aware. This will ensure you have the latest file to look for adware and spyware.

Performing WebUpdate box will open.

Click the **Connect** button

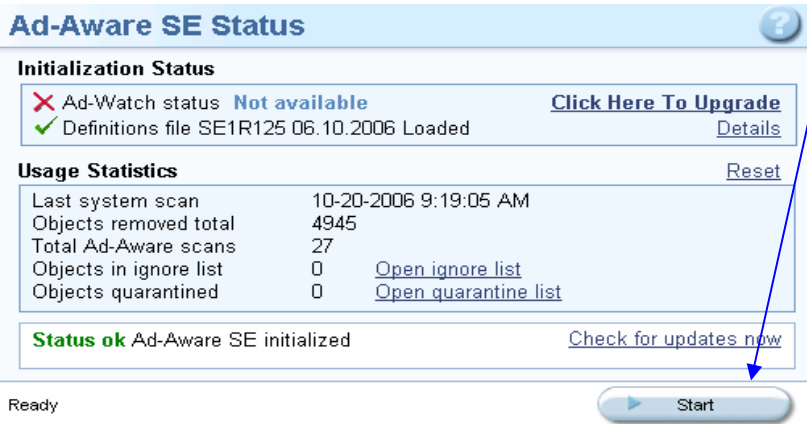
New definitions file available.

Click **OK** to download and install file.



When WebUpdate is complete, click **FINISH** to continue to the next step.

## STARTING THE SCAN

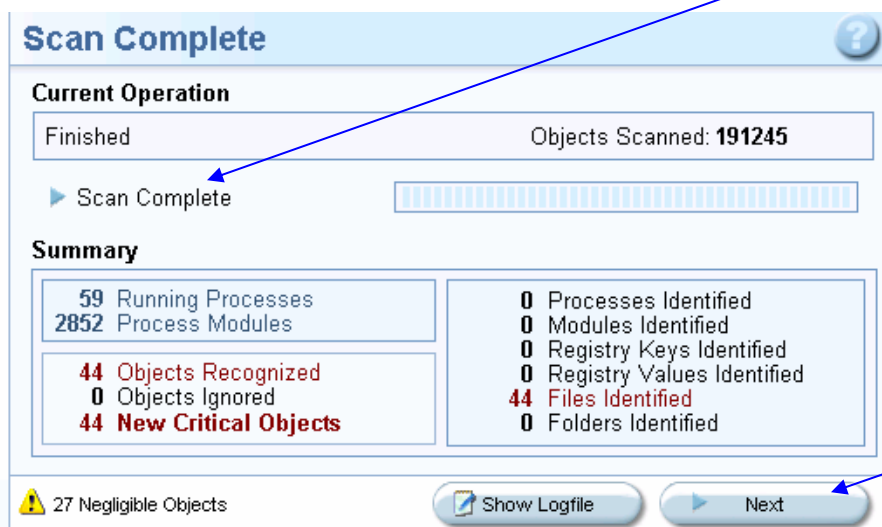


click **Start**,

the **Preparing System Scan** screen will appear - click **Next**.

the **Performing System Scan** will begin.

When Scan is complete, you will be prompted with Scan Complete

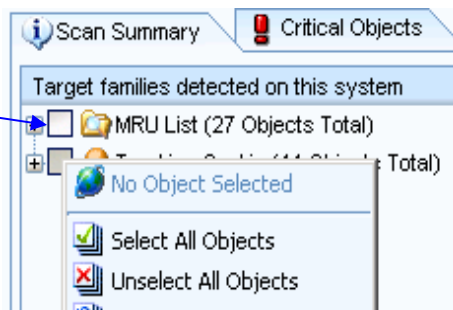


3. Click **Next**.

### Scanning Results.

On the Scan Summary, using your right mouse button – click in any box, select **Select All Objects**.

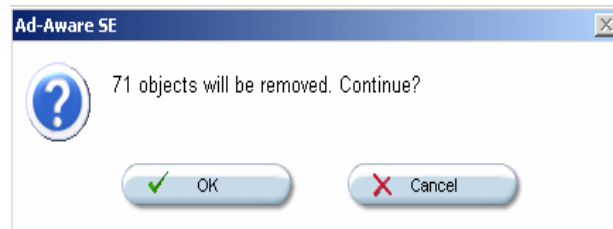
This will put a ✓ in all boxes.



Click **Next**, a confirmation box will appear, click **OK** to Continue

After removing the objects, Ad-Aware will cycle you back to the **Status Page**.

You are now finished! Exit Ad-Aware by selecting the **X** in the upper right hand corner.



**If you visit the internet often, Ad-Aware should be run at least once a week.**