

MUHLENBERG COLLEGE



T
E
N
N
I
S
2
0
1
0
-
1
1

Decade of excellence

A look at the past 10 years of Mule tennis.



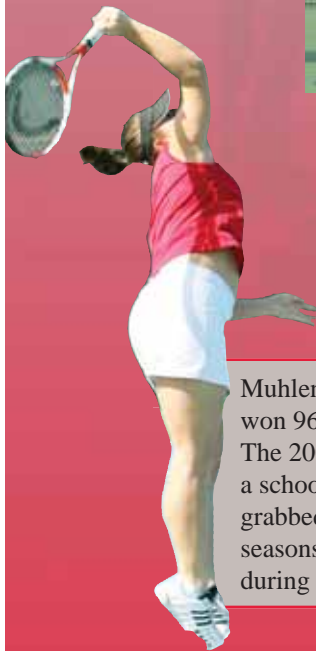
.770

Muhlenberg posted a .770 winning percentage in Centennial Conference play during the past decade. Its 77-23 CC record is good for third in the conference.



6

Six times in the past 10 years the Mules ended the season with either a conference championship or a postseason berth. Muhlenberg won CC crowns in 2002 and '04, and made the NCAA Tournament in 2005.



96

Muhlenberg won 96 matches during the past decade. The 2002, '04 and '05 teams each won a school-record 12 matches. The Mules grabbed at least 10 wins in five of the 10 seasons and won 66.2% of their matches during the decade.

MUHLENBERG

COLLEGE



MAJORS

Accounting *
American Studies
Anthropology *
Art *
(concentrations in Art History and Art Studio)
Biochemistry
Biology
Business Administration *
(concentrations in Entrepreneurial Studies, Human Resources Management, Management & Organization Studies, Management Science & Info Science, Managerial Finance and Marketing)
Chemistry *
Computer Science *
Dance *
Economics *
(concentrations in International and Public Policy)
English *
(concentration in Writing)
Environmental Science
Film Studies
Finance
French *
German
German Studies *
History *
History/Government
International Studies
Mathematics *
Media and Communication
Music *
(concentrations in Performance, Music Theory/Composition and Music History)
Natural Science
Neuroscience
Philosophy *
Philosophy/Political Thought
Physical Science
Physics *
Political Economy
Political Science *
Psychology
Religion Studies *
Russian Studies *
Sociology *
Spanish *
Theatre
(concentrations in Acting, Design, Directing, Performance Studies and Stage Management)

Founded: 1848.

Named for Henry Melchior Muhlenberg, patriarch of the Lutheran Church in the American Colonies.

Affiliation: Private, affiliated with Lutheran Church.

Location: Allentown, Pa.; 55 miles north of Philadelphia and 90 miles west of New York.

Academic Emphasis: Liberal arts and pre-professional studies.

Full-Time Enrollment: 2,200; 43% men, 57% women.

Student-Faculty Ratio: 12-1.

Admission: Highly selective. Over 4,200 applicants for a class of 580. The single most important factor is high school record. Entering freshmen are strong performers academically and give evidence of the potential for positive impact on the college community as extracurricular contributors as well.

Application Deadlines: Early Decision, February 1.

Regular Decision, February 15. Muhlenberg values the energy and enthusiasm Early Decision candidates bring to the campus.

Personal Interview: Strongly recommended.

Financial Aid: Approximately 65% of students receive some form of financial aid. Both need-based and merit aid are available.

“Strong in premed, prelaw, pre-anything.”

•
“Muhlenberg has produced Fulbright Fellows and Udall Scholars, but it also ensures that every student excels at his or her own pace.”

*Fiske Guide to Colleges
2008 Edition*

Students: Muhlenberg students are drawn largely from the Middle Atlantic and New England states, although 35 states and over a dozen foreign countries are represented.

Faculty: 161 full-time, 109 part-time. Faculty are drawn from America's finest universities. Their primary focus is excellence in teaching. 85% hold the Ph.D. or terminal degree.



MUHLENBERG

COLLEGE



Library Resources: Trexler Library resources include over 226,000 volumes and 360,000 microforms. An interlibrary loan program makes over 1.75 million books available to students with daily delivery to campus.

Campus Life: More than 100 clubs and student organizations, from United Student Government to Habitat for Humanity.

Active Learning: Many of Muhlenberg's classes are taught seminar style, with an emphasis on discussion and classroom interaction. Science labs are hands-on, with

“The small community and small, personal class sizes allow professors [to] ‘become friends, mentors, and role models’ to students. ‘They love what they do, they love students, and they love interacting with students.’ But professors aren’t just friendly faces. ‘They are [also] very knowledgeable in their fields’ and ‘challenge students to achieve more than they thought they were capable of.’”

*2008 Princeton Review
The Best 366 Colleges*

the opportunity to do real science in a small college setting. Independent study, mentored research, internships and field experience all are encouraged. The goal is to promote an active, participatory learning style.

That commitment to first-rate teaching and active learning means that Muhlenberg strives always to provide learning experiences that are not simply informational, but interesting, even inspirational. It means looking for teaching approaches where students are not passive but rather engaged, active learners. The result has been an academic program widely recognized for educational excellence based on both rigor and nurture.

Positive Outcomes: A Muhlenberg education provides a powerful launching pad to graduate school and entry-level careers. The College's success rates with both law school and medical school placement are regularly over 90%. In addition, many Muhlenberg students go on to master's and doctoral programs each year. Muhlenberg grads also go on to a full range of employment opportunities, from America's largest banks and accounting firms to its "blue chip" business concerns, from the most prominent social and helping agencies to schools, government and family-owned businesses, and from a variety of media, writing and advertising positions to work in the performing and fine arts.

MINORS

African American Studies
Asian Traditions
Creative Writing
Jewish Studies
Latin American Studies
Public Health
Sustainability Studies
Women's Studies
majors designated with an asterisk at left are also available as minors

CONCENTRATIONS

Non-science Medical Studies

CERTIFICATIONS

Elementary Education
Secondary Education

PREPROFESSIONAL PROGRAMS

Health professions
Prelaw
Religious vocation preparation

COOPERATIVE PROGRAMS

AROTC
Army Reserve Officer Training
Corps (AROTC) Program
Dentistry
University of Pennsylvania
School of Dental Medicine
Engineering
3-2 or 4-2 combined degree
program (Columbia University
or Washington University)
Environmental Science or Forestry
3-2 or 4-2 combined degree
program (Duke University)
Medicine
Drexel University and the
Lehigh Valley Hospital
Music Education
Moravian College
Occupational Therapy
5½-year combined degree
program (Thomas Jefferson
University)
Optometry
7-year combined degree pro-
gram (State University of New
York College of Optometry)
Physical Therapy
6-year combined degree
program (Thomas Jefferson
University)



PEYTON R. HELM

President of the College

Peyton Randolph Helm took office as president of Muhlenberg College July 1, 2003. He holds the faculty rank of professor of history.

Immediately prior to joining the Muhlenberg community, Helm served as vice president for college relations and professor of classical studies at Colby College in Waterville, Maine.

Helm began his career in academic administration at the University of Pennsylvania, where he was named coordinator of College House Programs in 1981. He served as associate director of development and then director of development for Penn's School of Arts and Sciences. From 1981-1988 he was also an adjunct assistant professor of ancient history and urban studies at Penn.

In 1988, Helm was named vice president for development and alumni relations at Colby, where he was promoted to vice president for college relations in 2001.

The Council for Advancement and Support of Education (CASE) has awarded Helm its Steuben Apple, given to advancement professionals who have been rated as a top speaker at 10 or more national conferences. Helm has delivered addresses and conducted seminars on ethics, stewardship, writing, capital campaigns, market research and volunteer management at more than 30 conferences across the country and internationally. His writing has been published in *CASE Currents* and *Successful Fund Raising*, as well as various scholarly publications in the field of ancient history.

Helm earned his bachelor's degree in archaeology, with *magna cum laude* and Phi Beta Kappa distinction, from Yale University. He earned his doctoral degree in ancient history, specializing in ancient Greek and Near Eastern history and literature, from the University of Pennsylvania.



KAREN GREEN

Vice President for Student Affairs/Dean of Students

Karen Green began her duties as vice president for student affairs/dean of students at Muhlenberg College on June 15, 2006, following more than four years as dean of students at Wells College in Aurora, N.Y.

At Muhlenberg, Green oversees more than 70 full-time employees and several departments, including athletics and recreation.

"Muhlenberg is committed to our scholar athletes and the athletic programs are an integral part of a liberal arts education," said Green. "The lessons learned from participation in our programs will sustain our students throughout their lives. The opportunity to be involved in intramural and recreational programs provides balance from the rigors of a challenging academic experience. Students learn negotiation skills, teamwork, time management and to be effective leaders.

"Our coaches are committed to excellence and are partners with students notwithstanding their skill level."

Green received her baccalaureate degree from Agnes Scott College in Atlanta in 1986, where the Karen Green Human Relations Award was created in her honor. She went on to earn her master's of divinity from the Candler School of Theology at Emory University in 1997.

Green began her administrative career as a resident director at Spelman College, later served in the admissions office at Agnes Scott and subsequently became director of orientation, residence life and student activities at her alma mater before leaving Atlanta to accept the position of director of multicultural affairs at Hamilton College in Clinton, N.Y.

She held additional leadership positions in student life at Agnes Scott, Emory and Hamilton before assuming the position of dean of students at Wells in September 2001.



SAM BEIDLEMAN

Director of Athletics

Following a national search, Muhlenberg College named Sam Beidleman director of athletics in July 2003. He had been serving as interim director of athletics since April 1, 2003.

As director of athletics, Beidleman supervises Muhlenberg's 22-sport varsity intercollegiate program, as well as the intramural and recreation programs.

"Muhlenberg College is proud of its long-standing tradition of academic and athletic excellence," said Beidleman. "While we strive to win on the field or court, we measure our success in many other ways including the development of character, leadership, scholarship and ethical behavior."

Beidleman returned to Muhlenberg after a prior 35-year association with the College, during which he held responsibilities in every area of athletics programming – as a student, coach, faculty member and administrator. He was a varsity letterwinner in football and track and spent 13 seasons as an assistant football coach following his graduation in 1963.

It was as a baseball coach that Beidleman truly made his mark, coaching the Mules from 1970 to 1992 and winning 255 games. His teams captured five Middle Atlantic Conference Southwest League titles and three Southern Division championships.

Beidleman, who held the academic rank of associate professor of physical education from 1965 to 1992, also served as men's intramural director and director of recreation. After retiring from coaching, he was the full-time athletic business and facilities manager until August 2000.

A 2006 inductee into the Muhlenberg Athletic Hall of Fame, Beidleman earned his master's degree in counseling and guidance from Kutztown University in 1970.

COREY GOFF

Associate Director of Athletics



Corey Goff was promoted to associate director of athletics in 2008 after five years as an assistant director of athletics. In addition to his administrative duties, he serves as head baseball coach and summer camp coordinator.



MEGAN EDDINGER

Senior Woman Administrator

Megan Eddinger was promoted to senior woman administrator in 2010. In addition to her administrative duties, she serves as advisor to the Student-Athlete Advisory Committee and head field hockey coach.

ATHLETIC SUPPORT STAFF

Athletic Trainers



Steve
Nemes

Lindsay
Weiss

Nate
Roberts

Athletic Business Manager



Ray Ramella

CENTENNIAL CONFERENCE



In its 18th year of all-sports competition, the Centennial Conference has taken its place among the nation's elite small-college conferences.

Founded in 1983 as the Centennial Football Conference and expanded to an all-sports league in 1992, the Centennial Conference encourages athletic competition among national liberal arts colleges and universities that share similar academic aspirations and a commitment to the importance of the total educational experience of students engaged in sports. Intercollegiate athletics programs are an integral part of the life of the member institutions and flow from their educational objectives. Each institution provides a comprehensive, broad-based athletics program. All varsity sports are treated equitably, and every sport is important.

The CC women's tennis champion receives an automatic bid to the NCAA Division III Tournament.

www.centennial.org

Muhlenberg College sponsors a comprehensive 22-sport intercollegiate athletics program. The Mules compete in the Centennial Conference in all sports and are members of the National Collegiate Athletic Association (NCAA) Division III.

Muhlenberg's sports program is designed to offer quality competitive experiences for the serious athlete, with opportunities for outstanding teams and individuals to advance to national Division III championships. However, given the breadth of the program, opportunities also exist for the unrecruited athlete to participate in varsity sports.

Muhlenberg has excellent on-campus athletic facilities. Opened in 1982, the Life Sports Center is a building designed for athletics, intramurals and "sports for life" as primary uses. The original solar-heated building, a series of three additions to the Memorial Hall gymnasium, includes the spacious John Deitrich Field House, featuring basketball and tennis courts and a 160-meter running track; the 25-meter Alumni



During the 2009-10 school year, Muhlenberg won the Centennial Conference regular-season titles in men's soccer, women's soccer and women's basketball. Mule teams or individuals earned bids to the NCAA Division III Championships in women's soccer, men's and women's track and field, women's basketball and men's cross country.

Pool; and the Levering Tyson wing, containing racquetball and squash courts and rooms for sports medicine, weight training, wrestling, dance, instruction and equipment distribution. Memorial Hall, the original facility built in 1954, seats 3,529 and is an excellent facility for viewing indoor sports.

The Life Sports Center recently underwent a significant renovation that further improved the Mules' facilities. The three-level, 40,000-square foot addition was built directly west of the Deitrich Field House and opened in the fall of 2004. The new facility includes additional locker rooms and office space, new recreation and fitness areas and a new health and counseling center.

Outdoors, the Mules have a grass field used by the men's and women's soccer teams, constructed in 1997, and a stadium for use by field hockey, football and lacrosse surrounded by an eight-lane, all-weather track, constructed in 1998 and resurfaced with AstroTurf GameDay Grass™ 3D in 2008.

Kern Field Courts

The Muhlenberg women's tennis team plays on the courts at Kern Field. The six lighted courts, located in a picturesque campus setting, were constructed on the site of Kern Field during the summer and fall of 2003. In the summer of 2009 the courts were resurfaced and repainted in "US Open" colors.

The Mules opened up play on the new courts with a 33-match winning streak, and the team is 52-12 all-time on its home court.

Life Sports Center

A three-level, 40,000-square-foot addition to the Life Sports Center opened in August 2004, further improving Muhlenberg College's athletic facilities.

The addition, built directly west of the John Deitrich Field House, includes a large weight facility, an expanded cardio-fitness area, a snack bar, new facilities for health service and counseling, training rooms, locker rooms and coaches' offices. The structure offers a spectacular view of the College's outdoor facilities and is joined to the original Life Sports Center by a large indoor corridor on the main level. A new main entrance faces the campus.

The addition, built directly west of the

John Deitrich Field House, includes a large weight facility, an expanded cardio-fitness area, a snack bar, new facilities for health service and counseling, training rooms, locker rooms and coaches' offices. The structure offers a spectacular view of the College's outdoor facilities and is joined to the original Life Sports Center by a large indoor corridor on the main level. A new main entrance faces the campus.

The project also entailed renovations in the Field House, including installation of a new floor and track, new netting, new lighting and painting.

*weight room**cardio-fitness area**field house*

The Field House, where the women's tennis team plays and practices before the weather gets warm in the spring, also underwent significant renovation, including the installation of a new floor and track, new netting, and new lighting and painting.



LINDA ANDREWS

Head Coach
Springfield '68 • 27th Season

Linda Andrews reclaimed the reins of the Muhlenberg women's tennis team for the 2001-02 school year and has led the Mules to the best period in their history.

Muhlenberg is 85-45 over the last nine spring seasons, winning two Centennial Conference championships, making its first appearance in the NCAA Division III Championships and crowning the first All-American in program history.

Since 2002, the Mules have an outstanding 70-20 (.778) record in the CC, third only behind traditional powers Swarthmore and Johns Hopkins.

Under Andrews' tutelage, Muhlenberg shared the Centennial Conference title in 2002, setting a school record of 12 wins and ending the season ranked 28th in Division III. The Mules tied the 12-victory mark during the 2004 season, securing the conference crown outright, and again in 2005, earning a bid to the national tournament.

A Muhlenberg player reached the CC singles final every year from 2003 to 2005, with Gena Ross winning the title in 2003.

The Mules have earned regional rankings each of the last eight seasons with Andrews in charge, and have upgraded their schedule to include more nationally and regionally ranked teams.

A 1968 graduate of Springfield College, Andrews coached the Mules from 1983 to 1999, compiling a record of 100-98 and winning 10 division championships in an 11-year span. Her overall record is 185-143 in 26 seasons.

Andrews has played tennis for more than 20 years, holding numerous singles and doubles titles at her local club. She holds the rank of associate professor of physical education at Muhlenberg and also serves the College as director of the physical education curriculum and the Wellness Institute. Andrews was head coach of cross country from 1990 to 2004.

Prior to coming to Muhlenberg, she was a faculty member and women's tennis coach at Willamette University in Salem, Ore.

**MULE TENNIS
UNDER COACH ANDREWS**

Year	Record	
1983	5-5	MAC North champions
1984	4-6	MAC Northeast champions
1985	8-4	MAC Northeast champions
1986	11-1	MAC North champions
1987	11-2	MAC North champions
1988	8-4	MAC Northeast champions
1989	9-4	MAC North champions
1990	4-7	
1991	6-7	MAC North champions
1992	6-5	MAC Northeast champions
1993	7-4	MAC Northeast champions
1994	4-7	
1995	3-8	
1996	1-10	
1997	2-9	
1998	6-6	
1999	5-9	
2002	12-1	Centennial co-champions
2003	10-3	
2004	12-3	Centennial champions
2005	12-4	NCAA Tournament
2006	8-7	NCAA Tournament (individual)
2007	5-9	
2008	9-5	Centennial playoffs
2009	10-5	Centennial playoffs
2010	7-8	



PETE CARPENTER

Assistant Coach
Susquehanna '85
Seventh Season

Pete Carpenter is in his seventh year as an assistant coach with the Muhlenberg women's and men's tennis teams.

A 1985 graduate of Susquehanna University, Carpenter has been playing tennis competitively since 1972. He has competed in numerous ATP professional events (Futures and Challengers), earning a world ATP singles ranking of 1251.

Carpenter was co-owner of Adams International Tennis Academy in Allentown and current director of the junior program at Oakmont Tennis Club in Allentown.



Mule seniors Danielle Winston, Lindsay Schmidt, Sara Sutker and Caitie Druker

2010-11 Muhlenberg women's tennis roster

Name	Cl	Hometown/High School
Lauren Barnett *	So	Woodcliff Lake, N.J./Pascack Hills
Gabriela Contino	Fr	Fairton, N.J./Cumberland Regional
Caitie Druker ***+	Sr	Lawrenceville, N.J./The Hun School
Grace Jenkins	So	New York, N.Y./Purnell School (N.J.)
Emily Robbins	Jr	Bernardsville, N.J./Kent Place School
Nina Sanders	Fr	Randolph, N.J./Randolph
Lindsay Schmidt ***+	Sr	Commack, N.Y./Commack
Sara Sutker ***+	Sr	Berwyn, Pa./Conestoga
Emily Szulman	Fr	Port Washington, N.Y./Paul D. Schreiber
Amanda von Taube *	So	Wellesley, Mass./Wellesley
Lauren Wink	Jr	Edison, N.J./Rutgers Prep
Danielle Winston ***+	Sr	Milwaukee, Wis./Nicolet
Lauren Zakheim	Fr	Bala Cynwyd, Pa./Lower Merion

* letters won + captains



CAITIE DRUKER

Senior • 3VL
Lawrenceville, N.J./The Hun School

At Muhlenberg: Has been very competitive and strong at number one singles for the past two seasons ... Hits powerful ground strokes ... Her game is very smart and focused ... Tied for the career record for team doubles wins (28, with Sara Sutker) ... Ranks 13th in team history in combined wins ... **Personal:** Earned four varsity letters at The Hun School, playing both No. 1 doubles and No. 1 singles ... Honored with the Coach's Award ... Born Feb. 20, 1989 ... Parents are Conrad and Amy Druker ... A double major in business administration and media and communication ... Member of Alpha Chi Omega sorority ... Studied abroad in The Netherlands during the Fall 2009 semester.

Career Highlights

• **Honors**

Second-team All-Centennial Conference singles - 2010
Second-team All-CC doubles - 2010

• **Tournament Results**

2008-09: Won consolation singles bracket at F&M Fall Invitational

Career Statistics

	Spring		Fall		Tourn.		Combined
	S	D	S	D	S	D	
2007-08	10-3	8-5	1-0	1-0	2-2	3-2	25-12
2008-09	7-8	12-3	1-0	1-0	3-2	0-1	24-14
2009-10	9-6	8-6	0-0	0-0	0-0	0-0	17-12
Totals	26-17	28-14	2-0	2-0	5-4	3-3	66-38





LINDSAY SCHMIDT

Senior • 3VL
Commack, N.Y./Commack

At Muhlenberg: Game has shown tremendous improvement over the past three seasons ... Has quick hands and is very aggressive at the net ... Leads all active players in career individual doubles wins with 30 ... Tied for the career record for team doubles wins (28, with Danielle Winston) ... **Personal:** Was an all-state doubles player at Commack High School ... All-league four times and all-county twice ... Served for the match that clinched school's first team championship ... Born Sept. 14, 1989

... Parents are Karl and Marla Schmidt
... A mathematics major and economics minor.

Career Highlights

• **Honors**

Centennial Conference Academic Honor Roll - 2009, 2010

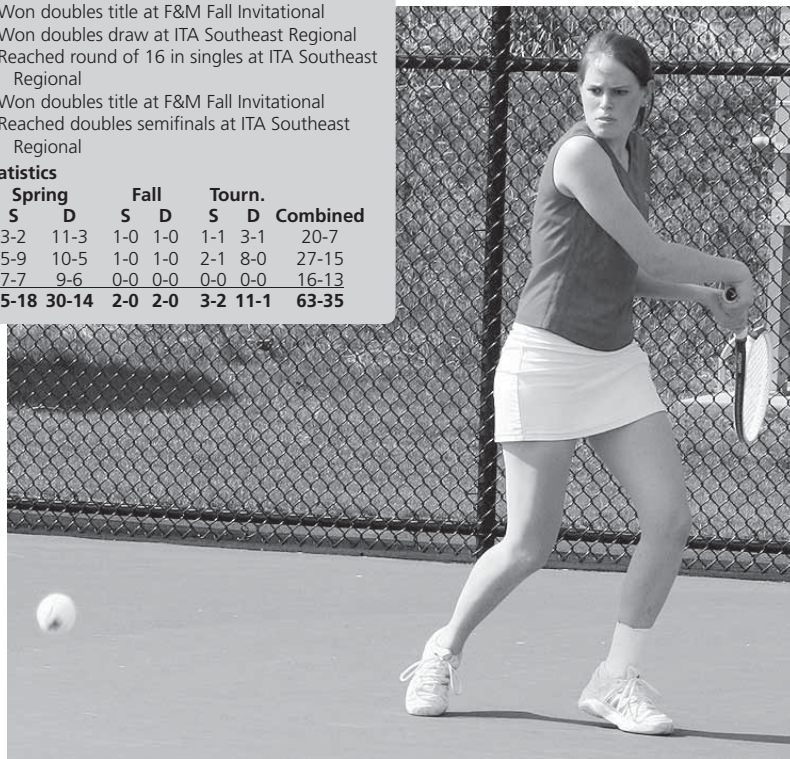
• **Tournament Results**

2008-09: Won doubles title at F&M Fall Invitational
Won doubles draw at ITA Southeast Regional
Reached round of 16 in singles at ITA Southeast Regional

2007-08: Won doubles title at F&M Fall Invitational
Reached doubles semifinals at ITA Southeast Regional

Career Statistics

	Spring		Fall		Tourn.		Combined
	S	D	S	D	S	D	
2007-08	3-2	11-3	1-0	1-0	1-1	3-1	20-7
2008-09	5-9	10-5	1-0	1-0	2-1	8-0	27-15
2009-10	7-7	9-6	0-0	0-0	0-0	0-0	16-13
Totals	15-18	30-14	2-0	2-0	3-2	11-1	63-35





SARA SUTKER

Senior • 3VL
Berwyn, Pa./Conestoga

At Muhlenberg: A very consistent and steady No. 2 singles player ... Leads through her dependability in pressure situations ... Has the most combined total wins of all active players with 58 ... Tenth in team history in combined wins and 11th in singles wins ... Tied for the career record for team doubles wins (28, with Caitie Druker) ... **Personal:** A

four-year letterwinner at Conestoga High School ... No. 1 singles player as a senior ... Named to Chester County all-area team ... Born Jan. 21, 1989 ... Parents are Stuart and Irene Sutker ... A double major in mathematics and finance.

Career Highlights

• **Honors**

Centennial Conference Academic Honor Roll - 2009, 2010
Second-team All-CC doubles - 2010

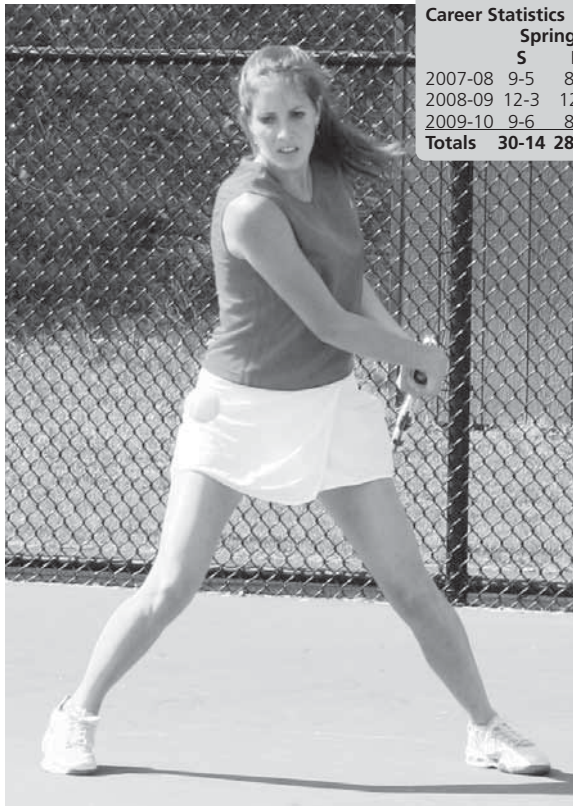
• **Tournament Results**

2008-09: Reached doubles final at F&M Fall Invitational
Reached round of 16 in singles at ITA Southeast Regional

2007-08: Reached doubles semifinals at CC Invitational

Career Statistics

	Spring		Fall		Tourn.		Combined
	S	D	S	D	S	D	
2007-08	9-5	8-5	1-0	1-0	1-1	4-2	24-13
2008-09	12-3	12-3	1-0	1-0	2-1	2-2	30-9
2009-10	9-6	8-6	0-0	0-0	0-0	0-0	17-12
Totals	30-14	28-14	2-0	2-0	3-2	6-4	71-34





DANIELLE WINSTON

Senior • 3VL
Milwaukee, Wis./Nicolet

At Muhlenberg: Leads through competitiveness and enthusiasm ... Very quick on the court ... A fierce and aggressive net player ... Tied for the career record for

team doubles wins (28, with Lindsay Schmidt) ...

Personal: Received a total of 11 letters in tennis, soccer and basketball at Nicolet High School ... Four-time first-team all-conference and state qualifier in tennis ... Finished in top 16 twice ... Born April 6, 1989 ... Parents are James Winston and Julie Gorens-Winston ... A psychology major and Spanish minor ... Member of Delta Zeta sorority ... Studied abroad in Spain during the Fall 2009 semester.



Career Highlights

• **Honors**

Centennial Conference Academic Honor Roll - 2009, 2010

• **Tournament Results**

2008-09: Won doubles title at F&M Fall Invitational
Won doubles draw at ITA Southeast Regional
Reached round of 16 in singles at ITA Southeast Regional

2007-08: Won doubles title at F&M Fall Invitational
Reached doubles semifinals at ITA Southeast Regional

Career Statistics

	Spring		Fall		Tourn.		Combined
	S	D	S	D	S	D	
2007-08	8-4	11-3	0-1	1-0	1-1	3-1	24-10
2008-09	7-2	8-2	0-1	1-0	2-1	8-0	26-6
2009-10	8-6	9-6	0-0	0-0	0-0	0-0	17-12
Totals	23-12	28-11	0-2	2-0	3-2	11-1	67-28

Returning Players

M



LAUREN BARNETT

Sophomore • 1VL
Woodcliff Lake, N.J./Pasack Hills

At Muhlenberg: Was an important contributor to the team's success as a freshman ... Demonstrates a positive attitude both on and off the court ... Has the potential to play a big role in the future of the team ... **Personal:** A four-year letterwinner at Pasack Hills High School ... Born Feb. 5, 1991 ... Parents are Howard and Cathy Barnett ... A psychology major ... Member of Hillel.



EMILY ROBBINS

Junior
Bernardsville, N.J./Kent Place School

At Muhlenberg: Will compete to try to break into the lineup after joining the team as a sophomore ... **Personal:** A team captain at Kent Place School ... Born March 18, 1990 ... Parents are Steven and Lynn Robbins ... A psychology major.



AMANDA VON TAUBE

Sophomore • 1VL
Wellesley, Mass./Wellesley

At Muhlenberg: Game has shown tremendous improvement from last season ... Uses height to her advantage ... Her lefty spin can throw off opponents ... Has the potential to make a big impact on the team ... **Personal:** A four-year letterwinner at Wellesley High School ... Named all-scholastic by *Boston Globe* and *Boston Herald* ... Team reached the state division one finals ... Compiled a 49-7 record during her high school career ... Born Oct. 11, 1990 ... Parents are Eugene and Debra von Taube ... A biology major.



**GABRIELA
CONTINO**

Freshman
Fairton, N.J./
Cumberland Regional

**GRACE
JENKINS**

Sophomore
New York, N.Y./
Purnell School (N.J.)

**NINA
SANDERS**

Freshman
Randolph, N.J./
Randolph

**EMILY
SZULMAN**

Freshman
Port Washington, N.Y./
Paul D. Schreiber

**LAUREN
WINK**

Junior
Edison, N.J./
Rutgers Prep

**LAUREN
ZAKHEIM**

Freshman
Bala Cynwyd, Pa./
Lower Merion

**2010 Muhlenberg women's tennis results**

(7-8 overall, 5-5 Centennial Conference)

at Vassar (7/17)	L	0-9	at Mary Washington (5/18)	L	1-8
at Moravian (17/nr)	W	5-3	at Haverford (19/nr) ^	L	4-5
McDANIEL ^	W	Fft	at New Jersey (6/16)	L	0-9
at Ursinus ^	W	6-3	BRYN MAWR ^	W	7-2
at Johns Hopkins (4/12) ^	L	1-8	FRANKLIN & MARSHALL ^	W	8-1
SWARTHMORE (9/nr) ^	L	1-8	at Gettysburg ^	W	6-3
DICKINSON (14/nr) ^	L	4-5	at Elizabethtown	W	6-3
at Washington College (15/nr) ^	L	2-7			^ CC

regional/national rank in parentheses



combined wins

Career

- 94 Amy Schmidt, 2003-06
- 84 Pam Kimmelman, 2004-07
- 82 Emily Oster, 2002-05
- 78 Mackenzie Parke, 2001-04
- 73 Carly Rotfeld, 2006-09
- 71 Sarah Niebler, 2001-04
- 66 Jenn Powell, 2006-09
- 63 Michele Marangi, 1986-88
- 59 Megan Schreiber, 2001-04
- 58 Sara Sutker, 2008-10**
- 57 Gena Ross, 2001-04
- 57 Kerri Waldowski, 1998-01
- 54 Caitie Druker, 2008-10**
- 53 Jennifer Cuccia, 1989-92
- 52 Laura Lemole, 1985-87
- 52 Robin DeMayo, 1983-86
- 51 Danielle Winston, 2008-10**
- 50 Connie Cox, 1986-89
- 47 Dawn Degnan, 1988-91
- 45 Lindsay Schmidt, 2008-10**
- 42 Jill Gregor, 1989-92
- 42 Elisa Zafrani, 1983-86
- 41 Marissa Lutzer, 1998-01
- 39 Megan Barry, 1989-92
- 37 Kris Andrews, 1986-87
- 37 Charlotte Reutz, 1984-87
- 37 Jackie Fierro, 1982-85
- 36 Jennifer Chung, 2001-02
- 35 Rebeckah Harr, 1992-95
- 33 Jennifer Rotondo, 1992-95
- 30 Meredith Friedman, 1991-94

Season

- 29 Amy Schmidt, 2005
- 24 Sara Sutker, 2009**
- 24 Pam Kimmelman, 2005
- 24 Ashley Reed, 2005
- 24 Amy Schmidt, 2004
- 24 Pam Kimmelman, 2004
- 24 Mackenzie Parke, 2004
- 24 Gena Ross, 2002
- 23 Emily Oster, 2002
- 22 Emily Oster, 2005
- 22 Sarah Niebler, 2002
- 22 Jennifer Chung, 2001
- 22 Michele Marangi, 1986
- 21 Amy Schmidt, 2003
- 21 Megan Schreiber, 2002
- 21 Michele Marangi, 1988
- 21 Kris Andrews, 1987
- 21 Laura Lemole, 1986
- 20 Carly Rotfeld, 2009
- 20 six others

singles wins

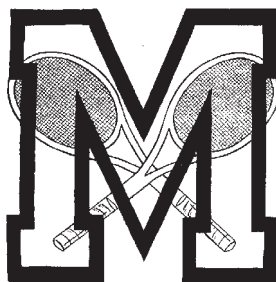
Career

- 53 Amy Schmidt, 2003-06
- 45 Carly Rotfeld, 2006-09
- 42 Pam Kimmelman, 2004-07
- 39 Mackenzie Parke, 2001-04
- 37 Emily Oster, 2002-05
- 36 Sarah Niebler, 2001-04
- 35 Megan Schreiber, 2001-04
- 32 Jenn Powell, 2006-09
- 31 Jennifer Cuccia, 1989-92
- 31 Michele Marangi, 1986-88
- 30 Sara Sutker, 2008-10**
- 30 Kerri Waldowski, 1998-01
- 29 Robin DeMayo, 1983-86
- 28 Gena Ross, 2001-04
- 27 Laura Lemole, 1985-87
- 26 Caitie Druker, 2008-10**
- 24 Rebeckah Harr, 1992-95
- 24 Dawn Degnan, 1988-91
- 23 Danielle Winston, 2008-10**
- 22 Jill Gregor, 1989-92
- 22 Connie Cox, 1986-89
- 21 Susan D'Ambrosio, 1991-94
- 21 Kris Andrews, 1986-87
- 21 Elisa Zafrani, 1983-86

Career Percentage

- .964 Amy Schmidt, 2003-06
- .913 Kris Andrews, 1986-87
- .867 Heidi Schadler, 1985-87
- .838 Michele Marangi, 1986-88
- .818 Ilyse O'Desky, 1985-86
- .800 Rebeckah Harr, 1992-95
- .776 Carly Rotfeld, 2006-09
- .730 Laura Lemole, 1985-87
- .689 Jennifer Cuccia, 1989-92
- .682 Charlotte Reutz, 1984-87
- .674 Robin DeMayo, 1983-86
- .667 Lisa Hunn, 1987-90

*** all records are for spring dual matches only*



singles wins

Season

- 15 Amy Schmidt, 2005
- 14 Amy Schmidt, 2004
- 13 Carly Rotfeld, 2009
- 13 Carly Rotfeld, 2007
- 13 Amy Schmidt, 2006
- 13 Megan Schreiber, 2001
- 12 Sara Sutker, 2009**
- 12 Pam Kimmelman, 2007
- 12 Pam Kimmelman, 2005
- 12 Kelly Fraser, 2005
- 12 Jennifer Chung, 2001
- 12 Kris Andrews, 1987
- 11 Pam Kimmelman, 2004
- 11 Mackenzie Parke, 2004
- 11 Sarah Niebler, 2003
- 11 Amy Schmidt, 2003
- 11 Gena Ross, 2002
- 11 Sarah Niebler, 2002
- 11 Heidi Schadler, 1987
- 11 Laura Lemole, 1987
- 11 Michele Marangi, 1986
- 10 Caitie Druker, 2008**
- 10 Carly Rotfeld, 2006
- 10 Ashley Reed, 2005
- 10 Gena Ross, 2003
- 10 Mackenzie Parke, 2003
- 10 Emily Oster, 2002
- 10 Megan Schreiber, 2002
- 10 Mackenzie Parke, 2001
- 10 Kerri Waldowski, 2001
- 10 Michele Marangi, 1988
- 10 Michele Marangi, 1987
- 10 Ilyse O'Desky, 1986
- 10 Laura Lemole, 1986

Consecutive

- 38 Amy Schmidt, 2004-06
- 18 Megan Schreiber, 2001-02
- 15 Sarah Niebler, 2001-02
- 13 Amy Schmidt, 2003-04
- 13 Heidi Schadler, 1986-87
- 12 Kris Andrews, 1987
- 11 Sara Sutker, 2009**
- 11 Carly Rotfeld, 2009
- 11 Carly Rotfeld, 2007
- 11 Gena Ross, 2001-02
- 10 Pam Kimmelman, 2007
- 10 Sarah Niebler, 2003
- 10 Mackenzie Parke, 2003
- 10 Michele Marangi, 1986-87
- 10 Ilyse O'Desky, 1986



doubles wins

Career Individual

- 45 Emily Oster, 2002-05
- 42 Pam Kimmelman, 2004-07
- 41 Amy Schmidt, 2003-06
- 39 Mackenzie Parke, 2001-04
- 35 Sarah Niebler, 2001-04
- 34 Jenn Powell, 2006-09
- 32 Michele Marangi, 1986-88
- 30 Lindsay Schmidt, 2008-10**
- 29 Gena Ross, 2001-04
- 28 Caitie Druker, 2008-10**
- 28 Sara Sutker, 2008-10**
- 28 Danielle Winston, 2008-10**
- 28 Carly Rotfeld, 2006-09
- 28 Marissa Lutzer, 1998-01
- 28 Connie Cox, 1986-89
- 27 Kerri Waldowski, 1998-01
- 25 Megan Barry, 1989-92
- 25 Laura Lemole, 1985-87
- 24 Megan Schreiber, 2001-04
- 23 Dawn Degnan, 1988-91
- 23 Robin DeMayo, 1983-86
- 22 Jennifer Cuccia, 1989-92
- 22 Charlotte Reutz, 1984-87
- 21 Elisa Zafrani, 1983-86

Career Percentage

- .914 Michele Marangi, 1986-88
- .880 Charlotte Reutz, 1984-87
- .737 Connie Cox, 1986-89
- .727 Kris Andrews, 1986-87
- .719 Amy Schmidt, 2003-06
- .714 Laura Lemole, 1985-87
- .706 Heidi Schadler, 1985-87
- .639 Robin DeMayo, 1983-86
- .628 Kerri Waldowski, 1998-01

Season (Individual)

- 14 Amy Schmidt, 2005
- 14 Ashley Reed, 2005
- 13 Mackenzie Parke, 2004
- 13 Pam Kimmelman, 2004
- 13 Gena Ross, 2002
- 13 Emily Oster, 2002
- 12 Caitie Druker, 2009**
- 12 Sara Sutker, 2009**
- 12 Pam Kimmelman, 2005
- 12 Emily Oster, 2005
- 11 Danielle Winston, 2008**
- 11 Lindsay Schmidt, 2008**
- 11 Sarah Niebler, 2002
- 11 Megan Schreiber, 2002
- 11 Michele Marangi, 1988
- 11 Connie Cox, 1988
- 11 Michele Marangi, 1986
- 11 Laura Lemole, 1986

doubles wins

Consecutive (Individual)

- 15 Charlotte Reutz, 1986-87
- 15 Michele Marangi, 1986-87
- 13 Gena Ross, 2002
- 13 Amy Schmidt, 2005
- 13 Ashley Reed, 2005
- 13 Emily Oster, 2002
- 12 Laura Lemole, 1986-87
- 10 Sarah Niebler, 2001-02
- 9 Mackenzie Parke, 2003-04
- 9 Heidi Schadler, 1987

Career (Team)

- 28 Caitie Druker and Sara Sutker, 2008-10**
- 28 Danielle Winston and Lindsay Schmidt, 2008-10**
- 21 Kerri Waldowski and Marissa Lutzer, 1998-01
- 18 Sarah Niebler and Megan Schreiber, 2001-04
- 16 Jenn Powell and Pam Kimmelman, 2006-07
- 16 Mackenzie Parke and Jennifer Chung, 2001-02
- 15 Jenn Powell and Carly Rotfeld, 2008-09
- 13 Amy Schmidt and Ashley Reed, 2005
- 13 Amy Schmidt and Emily Oster, 2003-04
- 13 Mackenzie Parke and Pam Kimmelman, 2004
- 13 Gena Ross and Emily Oster, 2002
- 13 Jackie Fierro and Robin DeMayo, 1983-85
- 12 Michele Marangi and Connie Cox, 1987-88
- 11 Pam Kimmelman and Emily Oster, 2005
- 10 Lara Beatus and Whitney Heaton, 1993-95
- 10 Dawn Degnan and Jill Gregor, 1989-90
- 9 Anne Bartolussi and Megan Barry, 1989
- 9 Michele Marangi and Kris Andrews, 1986-87
- 9 Michele Marangi and Laura Lemole, 1986
- 8 Gena Ross and Mackenzie Parke, 2003
- 8 three other teams

doubles wins

Season (Team)

- 13 Amy Schmidt and Ashley Reed, 2005
- 13 Mackenzie Parke and Pam Kimmelman, 2004
- 13 Gena Ross and Emily Oster, 2002
- 12 Caitie Druker and Sara Sutker, 2009**
- 11 Danielle Winston and Lindsay Schmidt, 2008**
- 11 Pam Kimmelman and Emily Oster, 2005
- 11 Sarah Niebler and Megan Schreiber, 2002
- 11 Michele Marangi and Connie Cox, 1988
- 10 Jenn Powell and Pam Kimmelman, 2007
- 10 Amy Schmidt and Emily Oster, 2003
- 10 Mackenzie Parke and Jennifer Chung, 2001
- 9 Danielle Winston and Lindsay Schmidt, 2010**
- 9 three others

team records

Most wins in a season

- 12 2005 (12-3)
- 12 2004 (12-3)
- 12 2002 (12-1)
- 11 2001 (11-4)
- 11 1987 (11-2)
- 11 1986 (11-1)
- 10 2009 (10-5)
- 10 2003 (10-3)
- 9 2008 (9-5) and 1989 (9-4)

Fewest losses in a season

- 0 1972 (4-0)
- 1 5 times, most recent 2002 (12-1)

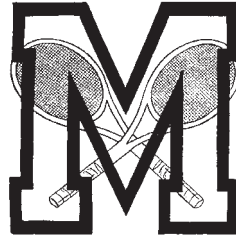
Longest winning streak

- 11 2003 to 2004 and 1986
- 9 2005 and 1971-73
- 8 1987

Most shutouts in a season

- 7 2004
- 5 2003 and 1986
- 4 2001 and 1987
- 3 2009, 2005 and 1993

good luck
grace and
to the
muhlenberg
women's tennis
team!



from,
her family

Emily,

I know that you're going to be hitting a lot of these...hard



Have a great tennis season! I know that you will do great!

Love,
Mike

**To Lindsay and her
Teammates,
Best Wishes for a
Winning Season!**



**Love, Aunt Lauren &
Uncle Ray**

To Lauren and her teammates:
Good luck for a successful 2011
season!!!



Love,
Grandma

Good luck Neenz!

**Love the Emilys (and
Blythe and Diana)**

Lindsay,
Wishing you and
your teammates
the best of luck in
the 2011 season!

Love,
Grandma



Good luck Lauren
And the Muhlenberg
Tennis Team!



Go Mules!
Love, Mom, Dad and Alex

“You’ve got to take the initiative and play your game. In a decisive set, confidence is the difference.” — Chris Evert

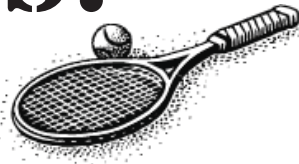
Gabriela,
Good luck to you and the rest of the
Mules!
Love,
Dani and Krysta



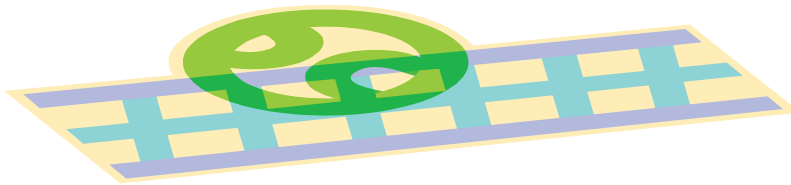
Saba & Savta
Wish
Sara
& Her Teammates
GOOD LUCK
This Season and Every Season



**GO
MULES!**



**We're cheering across the
miles for the Mules!
Go Danielle! Go team!**



**Love,
Nana, Elyse, Sari, Jacob, Ben,
Nancy, Bob, Linda, Mike**

Good Luck Muhlenberg!

Gabriela,
It's a fast four years...compete hard
and have fun!

Love,
Mom and Dad



Amanda,

**Best of luck to you and
the Muhlenberg tennis team!**



**Love, Mom & Dad
Arvid, George & Basil**



Caitie,

We are so proud
of you!

Good luck to you
and your teammates.

Love,
Mom and Dad



Milwaukee is
cheering for
Muhlenberg!

We are proud of
you,
Danielle!

Love,
Mom, Dad, Jennifer
& David

**Caitie,
Good luck to you and the
entire tennis team.
Go Mules!!**



**Love,
Grandma and Grandpa**



Emily

Wishing you and your teammates a
successful tennis season!

Go Mules!

Love,

Mom, Dad, Reba, Alice, Gilbert and Hobbes

GOOD LUCK LAUREN
AND THE ENTIRE
MUHLENBERG TENNIS
TEAM!



THE WINK FAMILY

**Sara,
Good luck to you and
the entire
Muhlenberg Women's
tennis team!
This year will be the
best ever!**



**GO MULES!
We love you**

Good Luck
Emily S.

Go

Mules!

From,
Her Family

Good luck

Grace

and to the

Muhlenberg

Women's

tennis team!

From,

Her family

**Nina,
Kick some ACE this season!**



**We love you,
Mom, Dad, Peri, and Mitchel**

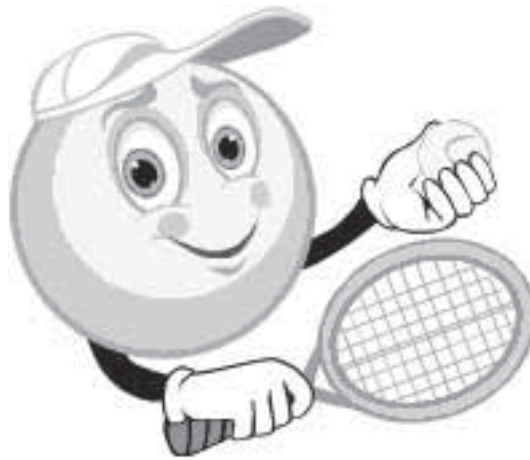
**Emily,
Good luck in the 2011 season!**



**Love you,
Meg**

 **Lindsay** 

**Wishing you a successful
senior season,
We are proud of you!**



Love,
Mom, Dad,
Jessica, Hayley, And Ava
GO MULES!

MUHLENBERG COLLEGE TENNIS



2010-11 SCHEDULE

• september

Sat 18 TCNJ Lions Fall Kickoff
 Sat 25 - ITA Southeast Regional
 Sun 26 (Mary Washington)

• february

SAT 26 VASSAR..... 1:00

• march

THR 17 ELIZABETHTOWN 3:30
 Tue 22 * at Franklin & Marshall..... 4:00
 Wed 23 * at Swarthmore..... 3:30
 SAT 26 * GETTYSBURG 1:00
 Tue 29 at Moravian 4:00
 WED 30 * BRYN MAWR 4:00

• april

Sat 2 * at Washington College 1:00
 TUE 5 * HAVERFORD 4:00
 SAT 9 * McDANIEL..... 1:00
 Wed 13 * at Ursinus 4:00
 Sat 16 * at Johns Hopkins 10:00
 TUE 19 * DICKINSON 4:00
 Wed 20 at New Jersey 3:00

* Centennial Conference match

