



# Volunteer IMPACT

July 1, 2019 –  
June 30, 2020

**TOTAL VOLUNTEERS 1,162**

**CONTRIBUTED \$2.1M**



**19,754**  
total volunteer hours  
valued at **\$537,309\***



**Volunteers by Decades:**

1950s **7**

1960s **52**

1970s **98**

1980s **101**

1990s **105**

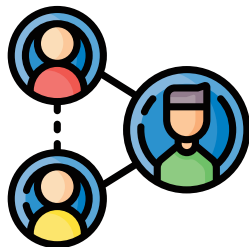
2000s **313**

2010s **479**

Friends of the College **7**

**2,958**

alumni/student interactions



**1,513** alumni

attended **187** volunteer-led events

Recruited and recognized **660** *Henry Melchior Muhlenberg Society* members

**417**

networking and professional development opportunities



**1,197**

peer to peer solicitations

