



LEHIGH VALLEY QUALITY OF LIFE SURVEY 2025

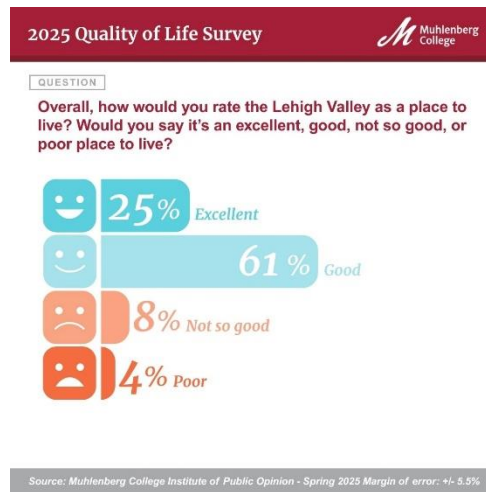
The following report examines public opinion regarding quality of life in the Lehigh Valley based on the results of the 2025 Lehigh Valley Quality of Life Survey. The survey was conducted by the Muhlenberg College Institute of Public Opinion (MCIPO) in partnership with The United Way of the Greater Lehigh Valley and WFMZ.



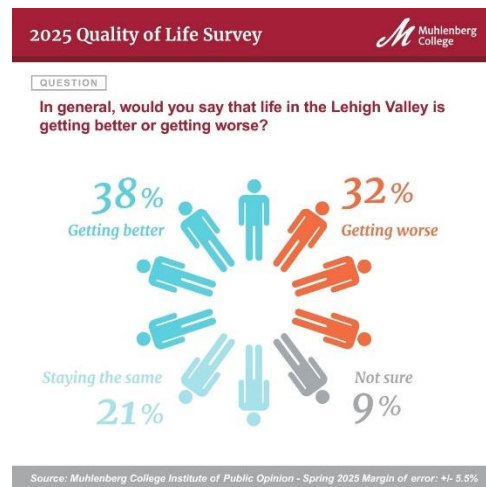
KEY FINDINGS AND SURVEY INSTRUMENT

KEY FINDINGS:

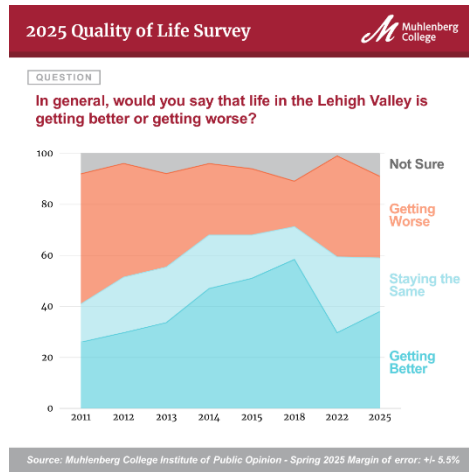
1. In general, Lehigh Valley residents maintain positive views regarding the overall quality of life in the region with 25% rating quality of life as “excellent” and 61% providing a “good” rating. These views on the overall quality of life in the region are largely unchanged since the last regional survey in 2022.



2. Residents of Northampton and Lehigh County maintain fairly divided views on the direction of life in the region with about 4 in 10 indicating life in the Valley is getting better, 3 in 10 noting life in the region is getting worse, and 2 in 10 expressing a view that life in the Lehigh Valley is staying the same.

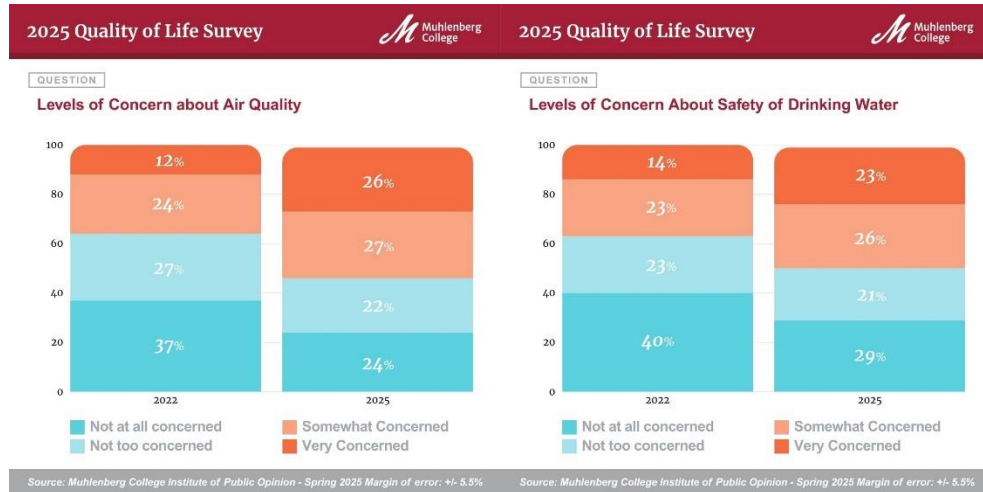


3. The percentage of Lehigh Valley residents who believe quality of life is improving in the area has risen slightly from 2022 to 2025 (30% to 38%) but remains well below the 59% positive direction level found in 2018.

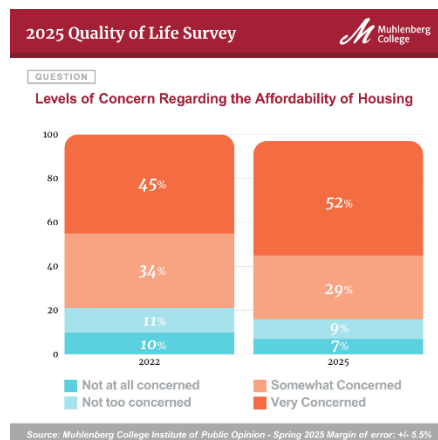


4. Among survey respondents who see life in the Lehigh Valley improving, factors such as new businesses and housing, increasing amount and variety of things to do, and better job opportunities were shared as the key reasons behind their optimism.
5. For Lehigh Valley residents that believe quality of life in the region is getting worse factors such as the size of the local population, traffic and dangerous driving, crime and the cost of living were commonly noted as the main reason for the negative appraisal of the direction of life in the region.
6. Satisfaction with neighborhood safety has increased among Lehigh Valley residents with 64% indicating they are very satisfied with the level of safety where they live, up from 55% expressing that view three years ago.

7. Concern with the conditions of air quality and drinking water in the Lehigh Valley has increased since 2022 with about half of survey respondents now indicating that they are either “very” or “somewhat” concerned with air and drinking water conditions in Northampton and Lehigh counties.



8. Over half (52%) of adult Lehigh Valley residents indicated that they were very concerned with the affordability of housing in the region, rising 7 percentage points since 2022 when 45% expressed the highest level of concern with this aspect of life in the region.



9. Positive ratings of the Lehigh Valley economy have increased since 2022 with 69% indicating the economy is either “excellent” or “good”, up from 57% three years ago.
10. Lehigh Valley residents report high levels of satisfaction with the relationships they have with their neighbors, with 52% reporting they are “very satisfied” and 36% “somewhat satisfied” with this aspect of quality of life.

METHODS

This report provides results of a telephone survey of 544 adult residents of Lehigh and Northampton counties in the Commonwealth of Pennsylvania. Interviews were conducted between April 16 and April 26, 2025. Respondents were interviewed in English on both landlines (162) and cell phones (382). With a randomly selected sample of respondents the margin of error for the surveys is +/- 5.5% at a 95% level of confidence. Margins of error for questions with smaller sample size will be larger. In addition to sampling error, one should consider that question wording and other fielding issues can introduce error or bias into survey results. The data has been weighted to gender, age, race, income and educational attainment to 2025 population parameters for Lehigh and Northampton counties provided by the United States Census Bureau. The calculation of sampling error takes into account design effects due to the weighting of the sample to the population parameters identified above. In order to reach a representative sample of Lehigh Valley adult residents, landlines and cell phones were called up to 3 times. Interviews were conducted by Communication Concepts of Easton Pennsylvania. Due to rounding, the totals provided in the frequency report may not total 100 percent. Data analysis and weighting were conducted through the use of the SPSS statistical software package Version 29.0. The survey instrument (presented in its entirety below) was designed by Dr. Christopher P. Borick, Dr. Lindsay Burt, and Dr. Lanethea Mathews-Schultz of Muhlenberg College in conjunction with the staff of the United Way of the Greater Lehigh Valley and WFMZ. The survey was funded by the United Way of the Greater Lehigh Valley, WFMZ and Muhlenberg College. For more detailed information on the methods employed please contact Muhlenberg College Institute of Public Opinion at 484-664-3444 or email Dr. Borick (christopherborick@muhlenberg.edu) or Dr. Burt at (lindsayburt@muhlenberg.edu).

SURVEY INSTRUMENT and FREQUENCY

Q1: What County do you currently reside in?

Lehigh County	51%
Northampton County	49%

Q2: Overall, how would you rate the Lehigh Valley as a place to live? Would you say it's an excellent, good, not so good, or poor place to live?

Excellent	25%
Good	61%
Not so good	8%
Poor	4%
Not sure (vol)	1%

TIME SERIES

	2025	2022	2018	2015	2014	2013	2012	2011
Excellent	25%	28%	32%	26%	31%	29%	29%	30%
Good	61%	58%	61%	66%	62%	63%	58%	61%
Fair	8%	11%	6%	7%	2%	5%	9%	9%
Poor	4%	4%	1%	1%	5%	3%	2%	<1%
Not Sure	1%	<1%	1%	1%	<1%	<1%	<1%	0%

Q3: In general, would you say that life in the Lehigh Valley is getting better or getting worse?

Getting better	38%
Getting worse	32%
Staying the same (vol)	21%
Not sure (vol)	9%

TIME SERIES

	2025	2022	2018	2015	2014	2013	2012	2011
Getting Better	38%	30%	59%	51%	47%	34%	30%	26%
Getting Worse	32%	40%	18%	26%	28%	37%	45%	51%
Staying the Same	21%	30%	13%	17%	21%	22%	22%	15%
Not Sure	9%	1%	11%	6%	4%	8%	4%	8%

Q4: What is the primary reason you think life in the Lehigh Valley is getting better/getting worse. (OPEN ENDED QUESTION ASKED TO THOSE WHO SELECTED EITHER BETTER/WORSE)

Of those who responded “getting better” to Q3, X% indicated the following primary reason:

Factor	Percent Responding
New businesses/Housing	17%
More Attractions/Things to Do	14%
Job Opportunities	11%
Access to healthcare/schools/necessary services	8%
Affordability/Economy	6%
Sense of Community	6%
Population size/Diversity	5%
Amount of Crime	4%
Cleanliness/Air quality	3%
Politics	3%
Infrastructure/Public transportation	3%
Location	1%
Nature/Outdoor Spaces	1%
Other	11%
Don't Know/No Response	6%

Of those who responded “getting worse” to Q3, X% indicated the following primary reason:

Factor	Percent Responding
Population Size/Diversity	17%
Traffic/Dangerous Driving	14%
Amount of Crime	13%
Affordability/Economy	10%
Overdevelopment/Warehouses	9%
Job Opportunities	8%
Politics	6%
Infrastructure/Public Transportation	3%
Access to healthcare/schools/necessary services	2%
Cleanliness/Air quality	2%
Sense of Community	1%
Location	1%
Nature/Outdoor spaces	1%
Other	9%
Don't know/No response	2%

Q5: In general, would you say that the quality of life in the Lehigh Valley is much better, somewhat better, somewhat worse, or much worse than regions of similar size in the United States?

Much better	21%
Somewhat better	37%
Somewhat worse	6%
Much worse	4%
About the same (vol)	13%
Not sure (vol)	19%

Next, I would like you to rate the quality of various categories of life in the Lehigh Valley. For each category that I mention, please rate it as either excellent, good, not so good, or poor as it pertains to life in the Lehigh Valley. (QUESTIONS 6 to 12 ROTATED)

	Excellent	Good	Not so good	Poor	Not sure (vol)
Q6: The economy	4%	65%	23%	7%	2%
Q7: Housing	4%	46%	28%	17%	5%
Q8: Race relations	7%	63%	20%	3%	8%
Q9: Transportation	5%	46%	29%	10%	10%
Q10: Public schools	11%	49%	18%	11%	12%
Q11: Parks and outdoor spaces	29%	57%	9%	3%	3%
Q12: Retail stores	16%	63%	13%	5%	3%

Now I would like to ask you some questions regarding your satisfaction with various aspects of life in the Lehigh Valley. For each aspect that I mention please indicate if you are very satisfied, somewhat satisfied, somewhat dissatisfied, or very dissatisfied with that aspect of life in the Lehigh Valley? (QUESTIONS 13 to 18 ROTATED)

	Very Satisfied	Somewhat Satisfied	Somewhat Dissatisfied	Very Dissatisfied	Not sure (vol)
Q13: Your current job	47%	24%	3%	4%	22%
Q14: Your relationship with neighbors	52%	36%	8%	2%	2%
Q15: Your recreation and entertainment options	44%	40%	9%	3%	4%
Q16: Safety in your neighborhood	64%	27%	4%	5%	1%
Q17: Your ability to travel around the Lehigh Valley	45%	36%	11%	7%	2%
Q18: Your opportunities to interact	49%	41%	4%	2%	4%

with others across generations					
--------------------------------	--	--	--	--	--

Next, I have a few questions regarding your level of concern for a variety of issues. For each issue that I mention please tell me if you are very concerned, somewhat concerned, not too concerned, or not at all concerned? (QUESTIONS 19 to 25 ROTATED)

	Very Concerned	Somewhat Concerned	Not Too Concerned	Not At All Concerned	Not sure (vol)
Q19: The loss of open spaces such as forests and farms in the Lehigh Valley	44%	31%	17%	8%	1%
Q20: Becoming a victim of a crime	16%	32%	32%	19%	1%
Q21: The safety of drinking water in your community	23%	26%	21%	29%	1%
Q22: The air quality in your community	26%	27%	22%	24%	1%
Q23: The affordability of housing in the Lehigh Valley	52%	29%	9%	7%	3%
Q24: The affordability of healthcare	49%	28%	11%	11%	2%
Q25: The ability to choose where you live as you age	29%	24%	19%	25%	3%

Q26: Now I have a few questions regarding mental health matters. First, how often, if ever, do you feel lonely or isolated from those around you?

All of the time	5%
Most of the time	6%
Sometimes	18%
Hardly ever	26%
Never	45%
Not sure (vol)	< 1%

Q27: How would you describe your own mental health or emotional well-being at this time? Would you say it is -- excellent, good, only fair, or poor?

Excellent	38%
Good	47%
Only fair	12%

Poor	2%
Not sure (vol)	1%

Q28: Compared to 12 months ago, would you say your mental health or emotional well-being is much better, somewhat better, somewhat worse, much worse or about the same as a year ago?

Much better	19%
Somewhat better	16%
Somewhat worse	14%
Much worse	3%
About the same as a year ago	48%
Not sure (vol)	1%

Q29: Which of the following best describes your residency in the Lehigh Valley? (READ LIST)

I lived all of my life in the Lehigh Valley	40%
I moved to the Lehigh Valley in the last 10 years	18%
I moved to the Lehigh Valley over 10 years ago	42%

Q30. Finally, I have a few questions about yourself. First, what is your current marital status?

Single	29%
Married	50%
Separated	1%
Divorced	6%
Widowed	9%
Partnered	5%

Q31. What is your highest level of education? Is it (READ LIST)?

Less than High School	4%
High School graduate	33%
Some college or technical school	25%
College graduate (4 yr. only)	22%
Graduate or professional degree	15%

Q32. Which of the following categories best describes your racial identity? (READ LIST)

White/Caucasian	65%
African-American	5%
Hispanic/Latino	21%
Asian	3%

Native American	< 1%
Mixed Race	3%
Other	2%

Q33. What is your zip code? (CODED INTO CATEGORIES)

Urban	39%
Rural	16%
Suburban	45%

Q34. Which of the following categories best describes your family income? (READ LIST)

Under \$20,000	10%
\$20,000 - \$40,000	15%
\$40,000 - \$60,000	16%
\$60,000 - \$80,000	13%
\$80,000 - \$100,000	10%
Over \$100,000	37%

Q35. How many people including yourself are currently living in your household?

1	19%
2	37%
3	17%
4	13%
5	7%
6	2%
7	0%
8	< 1%
9	< 1%

Q36: In which of the following age categories does your current age fall? (READ LIST)

18 – 24	12%
25 – 44	30%
45 – 54	16%
55 – 64	14%
65 – 74	14%
75 and older	13%

Q37: Finally, to which gender identity do you most identify? (READ LIST)

Male	49%
Female	51%
Another category besides male or female	< 1%

Selected Crosstabs

Q2: Overall, how would you rate the Lehigh Valley as a place to live? Would you say it's an excellent, good, not so good, or poor place to live?

	Excellent	Good	Not so good	Poor	Not sure
Lehigh County	24%	58%	10%	7%	1%
Northampton County	27%	64%	7%	2%	< 1%
Female	30%	60%	8%	2%	1%
Male	20%	63%	9%	7%	1%
No College Degree	22%	62%	9%	6%	1%
College Degree	31%	59%	8%	2%	1%
White	31%	55%	9%	4%	1%
Person of Color	14%	72%	9%	5%	0%
Under 60K Income	26%	55%	11%	8%	1%
Over 60K Income	26%	64%	7%	2%	1%
18 – 24	12%	75%	12%	0%	2%
25 – 44	24%	62%	9%	6%	0%
45 – 54	21%	64%	5%	8%	2%
55 – 64	29%	51%	12%	7%	1%
65 – 74	24%	63%	9%	4%	0%
75 or older	42%	52%	6%	0%	0%
Urban	24%	57%	12%	7%	1%
Suburban	27%	63%	7%	2%	1%
Rural	24%	64%	6%	5%	2%

Q3: In general, would you say that life in the Lehigh Valley is getting better or getting worse?

	Getting Better	Getting Worse	Staying the same	Not sure
Lehigh County	36%	32%	24%	8%
Northampton County	40%	33%	18%	9%
Female	36%	33%	21%	10%
Male	40%	32%	21%	7%
No College Degree	37%	36%	20%	8%
College Degree	41%	27%	24%	9%
White	34%	38%	20%	9%
Person of Color	46%	22%	23%	9%
Under 60K Income	39%	39%	15%	7%
Over 60K Income	42%	29%	22%	8%
18 – 24	43%	22%	24%	10%

25 – 44	41%	29%	24%	7%
45 – 54	41%	34%	19%	7%
55 – 64	46%	37%	12%	5%
65 – 74	26%	41%	23%	10%
75 or older	29%	32%	22%	17%
Urban	38%	31%	22%	10%
Suburban	36%	35%	22%	7%
Rural	44%	30%	15%	11%

Next, I would like you to rate the quality of various categories of life in the Lehigh Valley. For each category that I mention, please rate it as either excellent, good, not so good, or poor as it pertains to life in the Lehigh Valley. First, Q6: the economy

	Excellent	Good	Not so good	Poor	Not sure (vol)
Lehigh County	5%	63%	23%	8%	1%
Northampton County	3%	66%	24%	6%	2%
Female	4%	66%	22%	5%	2%
Male	4%	63%	24%	9%	1%
No College Degree	4%	63%	23%	9%	2%
College Degree	3%	67%	24%	4%	1%
White	5%	66%	21%	7%	1%
Person of Color	1%	62%	28%	8%	2%
Under 60K Income	4%	61%	23%	11%	2%
Over 60K Income	4%	68%	23%	5%	1%
18 – 24	5%	59%	29%	8%	0%
25 – 44	7%	62%	23%	6%	2%
45 – 54	1%	70%	17%	9%	2%
55 – 64	0%	71%	25%	4%	0%
65 – 74	4%	60%	24%	12%	0%
75 or older	4%	70%	20%	3%	3%
Urban	2%	67%	22%	9%	0%
Suburban	5%	64%	23%	6%	3%
Rural	7%	62%	27%	5%	0%

Q7: Housing

	Excellent	Good	Not so good	Poor	Not sure (vol)
Lehigh County	5%	40%	32%	17%	6%
Northampton County	3%	52%	24%	17%	5%
Female	3%	49%	28%	16%	4%
Male	5%	43%	29%	18%	6%
No College Degree	5%	45%	25%	19%	6%
College Degree	1%	48%	34%	13%	4%
White	5%	44%	28%	17%	5%
Person of Color	2%	49%	29%	16%	5%
Under 60K Income	2%	41%	32%	20%	6%
Over 60K Income	5%	54%	23%	16%	2%
18 – 24	5%	46%	32%	17%	2%
25 – 44	4%	45%	35%	13%	3%
45 – 54	0%	47%	29%	18%	6%
55 – 64	1%	50%	22%	18%	10%
65 – 74	1%	47%	27%	20%	5%
75 or older	11%	46%	17%	21%	6%
Urban	2%	44%	33%	17%	4%
Suburban	5%	44%	28%	19%	4%
Rural	6%	57%	15%	13%	10%

Now I would like to ask you some questions regarding your satisfaction with various aspects of life in the Lehigh Valley. For each aspect that I mention please indicate if you are very satisfied, somewhat satisfied, somewhat dissatisfied, or very dissatisfied with that aspect of life in the Lehigh Valley? First, Q14: Your relationship with your neighbors

	Very Satisfied	Somewhat Satisfied	Somewhat Dissatisfied	Very Dissatisfied	Not sure (vol)
Lehigh County	50%	35%	9%	4%	2%
Northampton County	54%	37%	6%	1%	3%
Female	52%	38%	8%	1%	1%
Male	53%	33%	7%	3%	4%
No College Degree	51%	36%	9%	2%	3%
College Degree	55%	35%	6%	2%	2%
White	56%	33%	9%	2%	1%
Person of Color	44%	42%	6%	3%	5%
Under 60K Income	50%	34%	11%	3%	3%
Over 60K Income	53%	37%	5%	3%	3%
18 – 24	41%	35%	18%	2%	5%

25 – 44	45%	41%	7%	6%	1%
45 – 54	52%	37%	2%	1%	7%
55 – 64	55%	33%	9%	1%	3%
65 – 74	62%	28%	10%	0%	0%
75 or older	65%	34%	1%	0%	0%
Urban	44%	39%	11%	5%	2%
Suburban	55%	36%	5%	1%	3%
Rural	66%	28%	6%	1%	0%

Q16: Safety in your neighborhood

	Very Satisfied	Somewhat Satisfied	Somewhat Dissatisfied	Very Dissatisfied	Not sure (vol)
Lehigh County	59%	31%	4%	7%	<1%
Northampton County	70%	23%	3%	3%	1%
Female	67%	26%	4%	3%	1%
Male	61%	28%	3%	7%	1%
No College Degree	60%	31%	4%	4%	1%
College Degree	71%	20%	2%	6%	1%
White	64%	28%	5%	3%	1%
Person of Color	63%	26%	2%	9%	0%
Under 60K Income	59%	31%	4%	6%	1%
Over 60K Income	65%	26%	4%	4%	1%
18 – 24	59%	29%	2%	11%	0%
25 – 44	62%	27%	7%	5%	0%
45 – 54	64%	33%	4%	0%	0%
55 – 64	65%	27%	1%	5%	1%
65 – 74	72%	21%	4%	3%	1%
75 or older	68%	26%	0%	4%	1%
Urban	54%	32%	5%	9%	0%
Suburban	69%	25%	3%	2%	1%
Rural	75%	19%	2%	2%	1%

Q17: Your ability to travel around Lehigh Valley

	Very Satisfied	Somewhat Satisfied	Somewhat Dissatisfied	Very Dissatisfied	Not sure (vol)
Lehigh County	41%	39%	11%	7%	3%
Northampton County	49%	33%	10%	8%	0%
Female	45%	36%	11%	7%	2%
Male	44%	35%	10%	8%	2%
No College Degree	41%	39%	11%	7%	3%

College Degree	50%	31%	11%	8%	0%
White	41%	35%	14%	8%	2%
Person of Color	52%	36%	4%	7%	1%
Under 60K Income	40%	41%	10%	5%	3%
Over 60K Income	46%	34%	12%	8%	<1%
18 – 24	43%	39%	13%	5%	0%
25 – 44	42%	35%	13%	7%	2%
45 – 54	51%	29%	7%	11%	2%
55 – 64	52%	37%	8%	3%	0%
65 – 74	42%	31%	14%	12%	1%
75 or older	38%	47%	4%	8%	3%
Urban	38%	42%	12%	6%	3%
Suburban	50%	31%	11%	7%	1%
Rural	47%	36%	7%	10%	0%

Next, I have a few questions regarding your level of concern for a variety of issues. For each issue that I mention please tell me if you are very concerned, somewhat concerned, not too concerned, or not at all concerned? First, Q19: The loss of open spaces such as forests and farms in the Lehigh Valley

	Very Concerned	Somewhat Concerned	Not too Concerned	Not at all Concerned	Not sure (vol)
Lehigh County	44%	29%	18%	8%	1%
Northampton County	43%	34%	16%	7%	<1%
Female	46%	32%	14%	7%	1%
Male	41%	31%	19%	8%	<1%
No College Degree	40%	33%	20%	6%	1%
College Degree	49%	29%	11%	10%	1%
White	48%	32%	13%	6%	<1%
Person of Color	35%	31%	24%	9%	2%
Under 60K Income	47%	31%	14%	7%	1%
Over 60K Income	41%	32%	20%	8%	0%
18 – 24	32%	35%	27%	6%	0%
25 – 44	44%	22%	23%	11%	0%
45 – 54	49%	36%	9%	5%	1%
55 – 64	40%	44%	11%	5%	0%
65 – 74	49%	35%	10%	5%	0%
75 or older	43%	28%	17%	8%	4%
Urban	42%	28%	20%	10%	1%
Suburban	43%	36%	14%	7%	0%
Rural	48%	28%	17%	5%	2%

Q21: The safety of drinking water in your community

	Very Concerned	Somewhat Concerned	Not too Concerned	Not at all Concerned	Not sure (vol)
Lehigh County	26%	28%	19%	27%	1%
Northampton County	20%	25%	24%	31%	1%
Female	23%	26%	19%	31%	1%
Male	22%	27%	24%	26%	1%
No College Degree	26%	28%	20%	26%	0%
College Degree	17%	24%	23%	34%	3%
White	20%	25%	26%	29%	1%
Person of Color	29%	31%	13%	27%	1%
Under 60K Income	26%	30%	18%	26%	0%
Over 60K Income	18%	24%	25%	32%	1%
18 – 24	9%	21%	32%	38%	0%
25 – 44	27%	28%	16%	28%	1%
45 – 54	31%	26%	21%	22%	0%
55 – 64	19%	31%	23%	27%	1%
65 – 74	19%	33%	18%	30%	0%
75 or older	24%	15%	28%	32%	1%
Urban	31%	30%	20%	20%	1%
Suburban	18%	26%	22%	34%	1%
Rural	18%	21%	26%	34%	1%

Q22: The air quality in your community

	Very Concerned	Somewhat Concerned	Not too Concerned	Not at all Concerned	Not sure (vol)
Lehigh County	27%	30%	19%	23%	1%
Northampton County	24%	25%	26%	24%	1%
Female	27%	22%	25%	25%	2%
Male	24%	33%	20%	23%	1%
No College Degree	27%	25%	22%	24%	2%
College Degree	24%	31%	22%	23%	1%
White	21%	29%	25%	24%	1%
Person of Color	35%	24%	17%	23%	1%
Under 60K Income	31%	24%	19%	24%	3%
Over 60K Income	21%	30%	25%	24%	<1%
18 – 24	14%	29%	32%	26%	0%
25 – 44	30%	24%	16%	28%	2%
45 – 54	35%	22%	20%	23%	0%
55 – 64	23%	32%	23%	20%	3%
65 – 74	22%	33%	27%	18%	0%

75 or older	22%	29%	23%	23%	3%
Urban	33%	29%	20%	17%	1%
Suburban	21%	25%	26%	26%	2%
Rural	19%	32%	16%	34%	0%

Q23: The affordability of housing in the Lehigh Valley

	Very Concerned	Somewhat Concerned	Not too Concerned	Not at all Concerned	Not sure (vol)
Lehigh County	55%	27%	7%	7%	4%
Northampton County	50%	31%	10%	8%	2%
Female	52%	28%	8%	8%	4%
Male	53%	29%	9%	7%	2%
No College Degree	52%	28%	9%	7%	4%
College Degree	53%	29%	8%	8%	2%
White	50%	30%	10%	7%	3%
Person of Color	58%	26%	7%	6%	4%
Under 60K Income	58%	24%	10%	6%	2%
Over 60K Income	51%	31%	7%	9%	3%
18 – 24	48%	37%	8%	6%	2%
25 – 44	59%	23%	8%	8%	3%
45 – 54	58%	29%	8%	5%	0%
55 – 64	40%	39%	11%	4%	7%
65 – 74	55%	27%	8%	9%	1%
75 or older	44%	26%	10%	13%	7%
Urban	59%	24%	10%	5%	1%
Suburban	48%	30%	9%	9%	4%
Rural	49%	34%	5%	9%	3%

Q27: How would you describe your own mental health or emotional well-being at this time?
Would you say it is – excellent, good, only fair, or poor?

	Excellent	Good	Only Fair	Poor	Not sure (vol)
Lehigh County	41%	44%	12%	3%	0%
Northampton County	35%	49%	13%	2%	1%
Female	30%	56%	12%	1%	1%
Male	47%	37%	12%	4%	0%
No College Degree	38%	47%	12%	3%	<1%
College Degree	39%	46%	14%	1%	1%
White	40%	48%	10%	1%	1%
Person of Color	35%	44%	17%	4%	0%
Under 60K Income	27%	51%	18%	4%	1%

Over 60K Income	42%	46%	9%	2%	<1%
18 – 24	27%	50%	20%	3%	0%
25 – 44	37%	45%	13%	4%	1%
45 – 54	45%	42%	12%	0%	1%
55 – 64	38%	43%	16%	3%	0%
65 – 74	40%	49%	8%	1%	1%
75 or older	42%	54%	4%	0%	0%
Urban	35%	47%	15%	3%	0%
Suburban	38%	49%	11%	2%	1%
Rural	47%	40%	9%	2%	1%

Selected Time-Series

Ratings of Quality of Life in the Lehigh Valley: 2011-2025

	2025	2022	2018	2015	2014	2013	2012	2011
Excellent	25%	28%	32%	26%	31%	29%	29%	30%
Good	61%	58%	61%	66%	62%	63%	58%	61%
Not So Good	8%	11%	6%	7%	2%	5%	9%	9%
Poor	4%	4%	1%	1%	5%	3%	2%	<1%
Not Sure	1%	<1%	1%	1%	<1%	<1%	<1%	0%

Views on the Direction of Life in the Lehigh Valley: 2011-2025

	2025	2022	2018	2015	2014	2013	2012	2011
Getting Better	38%	30%	59%	51%	47%	34%	30%	26%
Getting Worse	32%	40%	18%	26%	28%	37%	45%	51%
Staying the Same	21%	30%	13%	17%	21%	22%	22%	15%
Not Sure	9%	1%	11%	6%	4%	8%	4%	8%

Levels of Concern with the Loss of Open Spaces such as Forests and Farms

	Very Concerned	Somewhat Concerned	Not Too Concerned ¹	Not At All Concerned
2022	47%	29%	13%	11%
2025	44%	31%	17%	8%

Levels of Concern About Safety of Drinking Water

	Very Concerned	Somewhat Concerned	Not Too Concerned ²	Not At All Concerned
2022	14%	23%	23%	40%
2025 ³	23%	26%	21%	29%

¹ Final 2 categories in 2022 were: "Somewhat unconcerned" and "Very unconcerned"

² Final 2 categories in 2022 were: "Somewhat unconcerned" and "Very unconcerned"

³ 2025 survey phrasing = "The safety of drinking water in your community"

Levels of Concern About Air Quality

	Very Concerned	Somewhat Concerned	Not Too Concerned ⁴	Not At All Concerned
2022	12%	24%	27%	37%
2025	26%	27%	22%	24%

Levels of Satisfaction with Neighborhood Safety

	Very Satisfied	Somewhat Satisfied	Somewhat Dissatisfied	Very Dissatisfied
2022	55%	35%	7%	4%
2025	64%	27%	4%	5%

Levels of Concern Among Residents with Becoming a Victim of a Crime

	Very Concerned	Somewhat Concerned	Not Too Concerned	Not At All Concerned
2022	16%	32%	30%	22%
2025	16%	32%	32%	19%

Levels of Concern Regarding the Affordability of Housing

	Very Concerned	Somewhat Concerned	Not Too Concerned	Not At All Concerned
2022	45%	34%	11%	10%
2025	52%	29%	9%	7%

⁴ Final 2 categories in 2022 were: "Somewhat unconcerned" and "Very unconcerned"