



## Muhlenberg College Public Health Program

### 2025 Pennsylvania Health Survey

The following report examines opinions regarding public health issues in the Commonwealth of Pennsylvania in 2025. The report provides an overview of key findings from the 2025 Pennsylvania Health Survey. The survey was conducted in the Spring of 2025 by the **Muhlenberg College Institute of Public Opinion (MCIPO)** in conjunction with the **Muhlenberg College Public Health Program**.

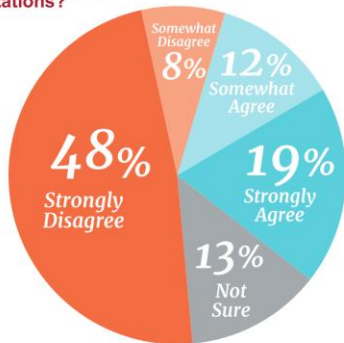
### Key Findings

- The survey results show a notable gain in the percentage of Pennsylvanians who believe there is a link between childhood immunizations and autism, with just under 1 in 3 Commonwealth adults (31%) agreeing (“strongly” or “somewhat”) that the chances of a child getting autism are increased if they receive the recommended childhood immunizations. The 31% agreement level is the highest in the 13-year history of this survey, and marks a doubling of the percentage of Pennsylvanians that at least partially agree with the unproven immunization-autism link since 2022.

#### 2025 Pennsylvania Health Survey

QUESTION

Do you strongly agree, somewhat agree, somewhat disagree, or strongly disagree that the chances of a child getting autism are increased if they receive the recommended childhood immunizations?

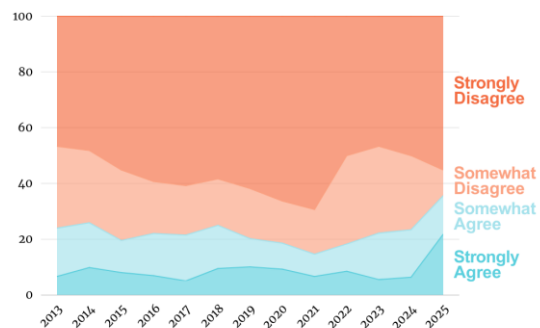


Source: Muhlenberg College Institute of Public Opinion - Spring 2025 Margin of error: +/- 5.5%

#### 2025 Pennsylvania Health Survey

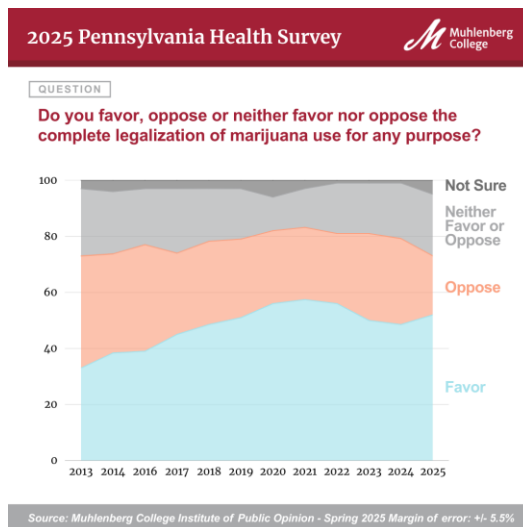
QUESTION

Do you strongly agree, somewhat agree, somewhat disagree, or strongly disagree that the chances of a child getting autism are increased if they receive the recommended childhood immunizations?

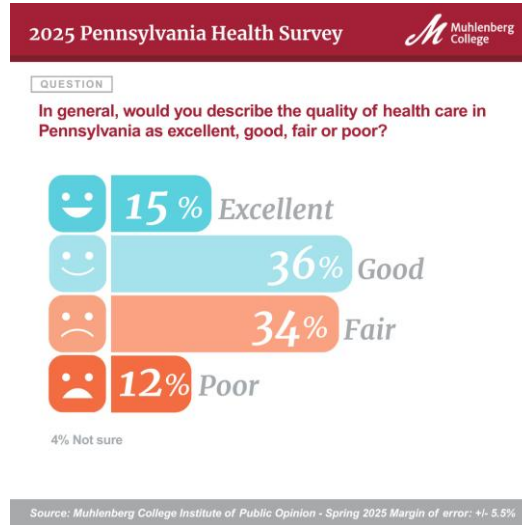


Source: Muhlenberg College Institute of Public Opinion - Spring 2025 Margin of error: +/- 5.5%

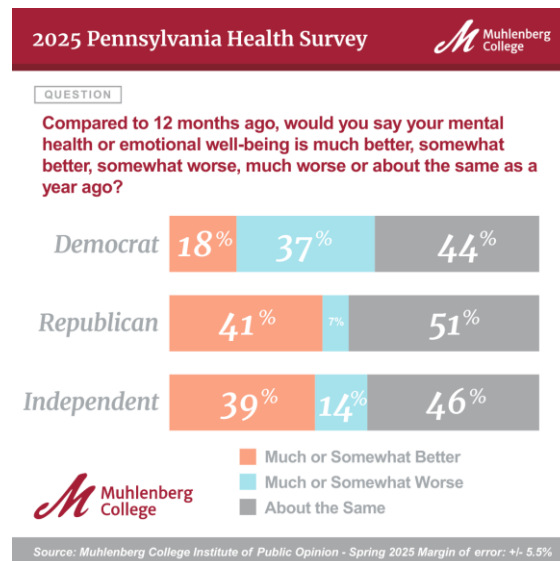
- Political party plays an important role in shaping viewpoints on the relative safety of immunizations with Republicans nearly twice as likely (41% to 21%) as Democrats to agree (“strongly” or “somewhat”) that the chances of a child getting autism are increased if they receive the recommended childhood immunizations.
- Less than 4 in 10 Pennsylvanians (36%) expressed trust (“a lot” or “some”) in Robert F. Kennedy Jr. to handle health care issues as Secretary of the Department of Health and Human Services (HHS).
- Perceptions of Kennedy appear linked to views on the relationship between immunizations and autism. Of Pennsylvanians who expressed “a lot” of trust in RFK Jr’s ability to handle health care issues as Secretary of HHS, almost half (49%) agree that the chances of autism are increased by receipt of childhood immunizations. This contrasts with those who express “no trust at all” in RFK Jr., with only 22% of this group agreeing with the claim that childhood immunizations and autism are linked.
- The 2025 Health Survey examined the impact of politics and current events as a source of stress on state residents, with the results indicating that women in Pennsylvania are almost twice as likely (42% to 22%) to report that politics and current events constitute a “major source” of stress in their lives.
- The effect of politics and current events on Keystone State residents varies considerably across partisan divides with 15% of Republicans reporting that politics and current events are a “major source” of stress, compared to 52% of Democrats, and 26% of self-identified independents.
- On the issue of legalization of marijuana, the survey finds the lowest percentage of Commonwealth residents opposing legalization of this substance since the question was first asked in 2013, with only about 1 in 5 adult Pennsylvanians (21%) currently opposing the legalization of marijuana in the state.



- The percent of Pennsylvanians who say that the quality of health care in the state is either “excellent” or “good” sits at 51%, down from a high of 70% in 2024. The 51% positive rating level is the lowest combined total since the MCIPO began asking the question in 2019.



- Pennsylvanians were less likely to report improved mental health in 2025 than they were in 2024. In this year’s findings 30% of state residents indicated their mental is “much better” or “somewhat better” than about a year ago, compared with 40% of state residents that reported improved mental health in 2024.
- Democrats are more likely than Republicans to indicate that their mental health or emotional well-being is “somewhat” or “much worse” than about a year ago, with 37% of Democrats in the Keystone State reporting diminished mental health over the last year compared with only 7% of their Republican counterparts.



## ***METHODOLOGY:***

This report provides results of a telephone survey of 521 adult residents of the Commonwealth of Pennsylvania. Interviews were conducted between March 10 and March 26, 2025. Respondents were interviewed in English on both landlines (n=104) and cell phones (n = 417). The sample of Pennsylvania adults was randomly selected from a stratified dual frame of cell and landline telephone numbers in the Commonwealth of Pennsylvania provided by Communication Concepts of Easton Pennsylvania. In order to reach a representative sample of Pennsylvania adult residents, landlines and cell phones were called up to 3 times. Interviews were conducted by live interviewers from Communication Concepts. When calling landlines interviewers ask to speak with the adult member of the household having the next birthday. When calling cell phones interviewers completed interviews with the individual who answered the call. To assure that individuals were currently adult residents of Pennsylvania interviewers confirmed residency in the state and that the respondent was 18 years of age or older. The sampling procedure is designed to be inclusive of all adult Pennsylvanians but may not account for individuals living in the Commonwealth with cell phone numbers not included in the sample frame employed in the study. With a randomly selected sample of respondents the margin of error for the survey is +/- 5.5% at a 95% level of confidence. Margins of error for questions with smaller sample size will be larger. In addition to sampling error, one should consider that question wording and other fielding issues can introduce error or bias into survey results.

The data has been weighted to gender, age, race, and educational attainment to 2025 population parameters for the Commonwealth of Pennsylvania provided by the United States Census Bureau. The calculation of sampling error takes into account design effects due to the weighting of the sample to the population parameters identified above. The AAPOR Response Rate 2 for the survey was 1.8%. Due to rounding, the totals provided in the frequency report may not total 100 percent. Data analysis and weighting were conducted through the use of the SPSS statistical software package Version 29.0. Coding of open-ended responses for Question Three in the instrument was completed by two human coders on the staff of the Institute of Public Opinion. As part of the effort to ensure data quality a random sample of 17 respondents to the survey were recontacted by staff from the Institute of Public Opinion to confirm that they had completed the survey on the date provided by Communication Concepts.

The survey instrument was designed by Dr. Christopher P. Borick, MCIPO Executive Director and Dr. Lindsay Burt, MCIPO Managing Director in conjunction with the staff of the MCIPO and Muhlenberg College Public Health Program and is presented in its entirety in the following section of the report. The survey was funded exclusively by Muhlenberg College. For more detailed information on the methods employed please contact the MCIPO at 484-664-3444 or email Dr. Borick at [cborick@muhlenberg.edu](mailto:cborick@muhlenberg.edu).



## Muhlenberg College Public Health Program 2025 Pennsylvania Health Poll INSTRUMENT

**SCREENER:** Thank you. Just to confirm are you a resident of Pennsylvania who is age 18 or older?

1. Yes	CONTINUE
2. No	THANK AND DISCONTINUE
3. Not Sure	THANK AND DISCONTINUE

Q1: In general, would you describe the quality of health care in Pennsylvania as excellent, good, fair or poor?

1. Excellent	15%
2. Good	36%
3. Fair	34%
4. Poor	12%
98. Not Sure (Vol)	4%

### Time Series

	Spring 2019	Spring 2020	Spring 2021	Spring 2022	Spring 2023	Spring 2024	Spring 2025
Excellent	20%	17%	14%	13%	21%	16%	<b>15%</b>
Good	47%	42%	48%	42%	45%	54%	<b>36%</b>
Fair	25%	24%	23%	30%	25%	22%	<b>34%</b>
Poor	5%	16%	12%	12%	7%	8%	<b>12%</b>
Not Sure	3%	<1%	4%	3%	1%	1%	<b>4%</b>

Q2: In general, would you describe the health care YOU have received in the last year as excellent, good, fair or poor?

1. Excellent	29%
2. Good	41%
3. Fair	22%
4. Poor	4%
5. Did not receive any health care in the last year (Vol)	3%
98. Not Sure (Vol)	1%

## Time Series

	Spring 2023	Spring 2024	Spring 2025
Excellent	29%	32%	<b>29%</b>
Good	48%	51%	<b>41%</b>
Fair	18%	13%	<b>22%</b>
Poor	5%	4%	<b>4%</b>
Not Sure	<1%	<1%	<b>1%</b>

Q3: In your opinion, what is the greatest threat to public health in Pennsylvania today? (OPEN ENDED)

Access to/cost of healthcare	23%
President Trump/Republicans/RFK Jr.	13%
Corporate actors/pharmaceutical companies	6%
Specific health conditions (i.e. cancer, bird flu)	5%
Misinformation, scientific skepticism, or lack of trust	4%
Recent policy shifts	4%
Democrats	3%
Environmental factors	3%
Economy/poverty	2%
Individual behaviors	2%
PA State government	<1%
Other	13%
Not sure/no response	23%

Q4: In the past year, have you or someone in your household had difficulty accessing health care due to cost?

1. Yes	26%
2. No	72%
3. Did not receive any health care in the last year (Vol)	1%
98. Not Sure (Vol)	1%

Q5: Would you say that your ability to access a variety of healthy food options in your community is excellent, good, fair or poor?

1. Excellent	27%
2. Good	38%
3. Fair	26%

4. Poor	10%
98. Not Sure (Vol)	1%

Q6: Next, I would like to ask you a question about marijuana. First, do you favor, oppose or neither favor nor oppose the complete legalization of the use of marijuana for any purpose?

1. Favor	52%
2. Oppose	21%
3. Neither Favor or Oppose	22%
98. Not Sure (Vol)	5%

### Time Series

	Spring 2013	Spring 2014	Spring 2016	Spring 2017	Spring 2018	Spring 2019	Spring 2020	Spring 2021	Spring 2022	Spring 2023	Spring 2024	Spring 2025
Favor	33%	38%	39%	45%	49%	51%	56%	58%	56%	50%	49%	<b>52%</b>
Oppose	40%	35%	38%	29%	30%	28%	26%	26%	25%	31%	31%	<b>21%</b>
Neither Favor or Oppose	24%	22%	20%	23%	19%	18%	12%	14%	18%	18%	20%	<b>22%</b>
Not Sure	3%	4%	3%	3%	3%	3%	6%	3%	1%	<1%	<1%	<b>5%</b>

Q7: Next, I have a few questions about mental health. How would you describe your own mental health or emotional well-being at this time? Would you say it is -- excellent, good, only fair, or poor?

1. Excellent	26%
2. Good	50%
3. Only Fair	16%
4. Poor	8%
98. Not Sure (Vol)	1%

### Time Series

	Spring 2021	Spring 2022	Spring 2023	Spring 2024	Spring 2025
Excellent	33%	35%	25%	32%	<b>26%</b>
Good	45%	44%	53%	51%	<b>50%</b>
Fair	19%	17%	17%	14%	<b>16%</b>
Poor	3%	4%	4%	3%	<b>8%</b>

Not Sure (Vol)	1%	<1%	0%	0%	<b>1%</b>
----------------	----	-----	----	----	-----------

Q8: Compared to 12 months ago, would you say your mental health or emotional well-being is much better, somewhat better, somewhat worse, much worse or about the same as a year ago?

1. Much Better	15%
2. Somewhat Better	15%
3. Somewhat Worse	15%
4. Much Worse	6%
5. About the Same as a Year Ago	48%
98. Not Sure (Vol)	1%

**Time Series**

	Spring 2021	Spring 2022	Spring 2023	Spring 2024	<b>Spring 2025</b>
Much Better	9%	12%	10%	13%	<b>15%</b>
Somewhat Better	17%	19%	26%	27%	<b>15%</b>
Somewhat Worse	18%	9%	10%	6%	<b>15%</b>
Much Worse	4%	3%	3%	3%	<b>6%</b>
About the Same as a Year Ago	53%	56%	51%	52%	<b>48%</b>
Not Sure	<1%	0%	0%	0%	<b>1%</b>

Q9: Are politics and current events a major source of stress, a minor source of stress, or not a source of stress for you?

1. Major Source	32%
2. Minor Source	35%
3. Not a Source	31%
98. Not Sure (Vol)	2%

Q10: Please indicate if you strongly agree, somewhat agree, somewhat disagree or strongly disagree with the following statements. First, the chances of a child getting autism are increased if they receive the recommended childhood immunizations. (ROTATE OPTIONS Q10 to Q15)

1. Strongly Agree	19%
2. Somewhat Agree	12%
3. Somewhat Disagree	8%
4. Strongly Disagree	48%
98. Not Sure (Vol)	13%

## Time Series

	Spring 2013	Spring 2014	Spring 2015	Spring 2016	Spring 2017	Spring 2018	Spring 2019	Spring 2020	Spring 2021	Spring 2022	Spring 2023	Spring 2024	Spring 2025
Strongly Agree	5%	8%	7%	6%	4%	8%	9%	8%	5%	7%	5%	6%	<b>19%</b>
Somewhat Agree	13%	13%	10%	13%	13%	13%	9%	8%	6%	8%	15%	16%	<b>12%</b>
Somewhat Disagree	22%	21%	22%	16%	14%	14%	16%	13%	12%	26%	28%	25%	<b>8%</b>
Strongly Disagree	35%	39%	48%	51%	48%	49%	55%	57%	52%	41%	42%	47%	<b>48%</b>
Not Sure	26%	19%	12%	14%	21%	16%	11%	15%	25%	18%	11%	6%	<b>13%</b>

Q11: Immunizations pose little health risks to those that receive them.

1. Strongly Agree	43%
2. Somewhat Agree	21%
3. Somewhat Disagree	12%
4. Strongly Disagree	16%
98. Not Sure (Vol)	9%

## Time Series

	Spring 2019	Spring 2020	Spring 2021	Spring 2022	Spring 2023	Spring 2024	Spring 2025
Strongly Agree	54%	49%	41%	41%	41%	40%	<b>43%</b>
Somewhat Agree	23%	25%	30%	34%	40%	36%	<b>21%</b>
Somewhat Disagree	9%	8%	9%	12%	15%	15%	<b>12%</b>
Strongly Disagree	9%	8%	3%	10%	3%	9%	<b>16%</b>
Not Sure	4%	10%	17%	4%	2%	1%	<b>9%</b>

Q12: Childhood vaccinations should be required for school enrollment, excepting only those with medical exemptions.

1. Strongly Agree	61%
2. Somewhat Agree	18%
3. Somewhat Disagree	7%
4. Strongly Disagree	10%
98. Not Sure (Vol)	4%

Q13: Access to abortions should be more limited in Pennsylvania

1. Strongly Agree	19%
2. Somewhat Agree	10%
3. Somewhat Disagree	12%
4. Strongly Disagree	50%
98. Not Sure (Vol)	9%

Q14: President Trump's Executive Order withdrawing the United States from the World Health Organization was in the best interest of the health of American citizens.

1. Strongly Agree	25%
2. Somewhat Agree	12%
3. Somewhat Disagree	5%
4. Strongly Disagree	49%
98. Not Sure (Vol)	10%

Q15: The United States withdrawal from the World Health organization will negatively impact US preparedness for the next pandemic.

1. Strongly Agree	47%
2. Somewhat Agree	10%
3. Somewhat Disagree	11%
4. Strongly Disagree	21%
98. Not Sure (Vol)	11%

Q16. How much trust do you have in Robert Kennedy Jr. to handle health care issues as Secretary of Health and Human Services?

A lot of trust	19%
Some trust	17%
Not too much trust	11%
No trust at all	40%
Not sure (Vol)	13%

Next, I'm going to read a list of issues in Pennsylvania today. For each issue I mention please indicate if you think the issue is a crisis, a problem but not a crisis, or not a problem at all. First: (ROTATE QUESTIONS 19-23)

Q17: Fracking

1. Crisis	12%
2. A problem but not a crisis	34%
3. Not a problem	39%
98. Not sure (Vol)	15%

Q18: Climate change

1. Crisis	39%
2. A problem but not a crisis	30%
3. Not a problem	28%
98. Not sure (Vol)	3%

**Time Series**

	Spring 2023	Spring 2024	Spring 2025
Crisis	29%	31%	<b>39%</b>
A problem but not a crisis	38%	46%	<b>30%</b>
Not a problem	28%	23%	<b>28%</b>
Not Sure	4%	<1%	<b>3%</b>

Q19: Obesity

1. Crisis	46%
2. A problem but not a crisis	45%
3. Not a problem	6%
98. Not sure (Vol)	3%

Q20: Domestic Violence

1. Crisis	39%
2. A problem but not a crisis	52%
3. Not a problem	4%
98. Not sure (Vol)	5%

**DEMOGRAPHICS**

Q27. Finally, I have a few questions about yourself. First, what is your current marital status?

Single	30%
Married	50%
Separated	3%
Divorced	7%
Widowed	6%
Partnered	2%
Not Sure (Vol)	2%

Q28. What is your highest level of education? Is it (READ LIST)?

Less Than High School	2%
High School Graduate	30%
Some College Or Technical School	26%
College Graduate (4 Yr Only)	27%
Graduate Or Professional Degree	15%
Not Sure (Vol)	1%

Q29. Which of the following categories best describes your racial identity? (READ LIST)

White/Caucasian	72%
Black/African-American	11%
Hispanic or Latino	7%
Asian	3%
Native American	1%
Mixed Race	2%
Or Other	3%
Not Sure (Vol)	1%

Q30: Which of the following categories best describes your current voting status? Are you registered as a (READ LIST)?

Democrat	43%
Republican	40%
Independent	14%
Other Party	2%
Or Not Registered To Vote In Pennsylvania	2%
Not Sure (Vol)	1%

Q31. Which of the following categories best describes your religious affiliation? Are you (READ LIST)?

Catholic	28%
Protestant	26%
Jewish	2%
Muslim	2%
Hindu	<1%
Other Religion (Including Agnostic)	28%
Atheist	8%
Not Sure (Vol)	6%

Q32. Do you have children under the age of 18?

Has Children Under 18	21%
No Children Under 18	79%

Q33: Which of the following best describes your health care insurance status? Are you primarily insured:

By A Plan Provided By Your Employer	50%
By A Plan That You Purchase Individually	8%
By Medicaid Coverage	8%
By Medicare Coverage	23%
Uninsured	3%
Other	6%
Not Sure (Vol)	2%

Q34: In which of the following age categories does your current age fall? READ LIST

18-29	22%
30-49	28%
50-65	26%
Or Over 65	24%

Q35. Which of the following categories best describes your family income? (READ LIST)

Under \$20,000	10%
\$20,000-\$40,000	19%
\$40,000-\$60,000	13%
\$60,000-\$80,000	13%
\$80,000-\$100,000	12%
Over \$100,000	24%
Not Sure (Vol)	9%

Q36: Finally, to which gender identity do you most identify? (READ LIST)

Female	50%
Male	49%
Transgender Male	0%
Transgender Female	<1%
Or you do not identify as male, female or transgender	<1%
Not Sure (Vol)	1%

### Selected Cross Tabulations

Q6: Next, I would like to ask you a question about marijuana. First, do you favor, oppose, or neither favor nor oppose the complete legalization of the use of marijuana for any purpose?

	<b>Favor</b>	<b>Oppose</b>	<b>Neither Favor Nor Oppose</b>
Female	49%	23%	22%
Male	55%	19%	23%
No College Degree	52%	18%	23%
College Degree	51%	27%	20%
White	54%	18%	22%
Person of Color	47%	29%	22%
Catholic	52%	25%	19%
Protestant	44%	25%	24%
Non-Christian/No Religion	54%	18%	22%
Democrat	64%	13%	19%
Republican	39%	31%	23%
Independent	51%	18%	28%
18-29	56%	18%	20%
30-49	57%	17%	23%
50-65	49%	23%	23%
Over 65	44%	27%	22%
Under 60K Income	52%	19%	25%
Over 60K Income	53%	22%	20%

Q8: Compared to 12 months ago, would you say your mental health or emotional well-being is much better, somewhat better, somewhat worse, much worse, or about the same as a year ago?

	<b>Much Better</b>	<b>Somewhat Better</b>	<b>Somewhat Worse</b>	<b>Much Worse</b>	<b>About the Same</b>
Female	18%	11%	18%	7%	44%
Male	12%	18%	13%	4%	53%
No College Degree	16%	15%	13%	6%	49%
College Degree	15%	14%	19%	6%	47%
White	14%	15%	14%	7%	49%
Person of Color	18%	15%	18%	4%	44%
Catholic	18%	16%	12%	4%	51%
Protestant	13%	13%	16%	3%	53%
Non-Christian/No Religion	16%	15%	16%	9%	43%
Democrat	7%	11%	26%	11%	44%
Republican	23%	18%	5%	2%	51%
Independent	20%	19%	13%	1%	46%
18-29	20%	24%	9%	4%	42%
30-49	15%	15%	15%	9%	46%

50-65	14%	11%	23%	6%	46%
Over 65	12%	10%	14%	5%	57%
Under 60K Income	16%	13%	12%	10%	46%
Over 60K Income	15%	17%	19%	3%	46%

Q9: Are politics and current events a major source of stress, a minor source of stress, or not a source of stress for you?

	<b>Major Source</b>	<b>Minor Source</b>	<b>Not a Source</b>
Female	42%	29%	27%
Male	22%	42%	35%
No College Degree	28%	33%	37%
College Degree	38%	39%	21%
White	34%	33%	31%
Person of Color	29%	40%	29%
Catholic	28%	36%	35%
Protestant	25%	40%	34%
Non-Christian/No Religion	41%	33%	23%
Democrat	52%	28%	18%
Republican	15%	41%	42%
Independent	26%	43%	27%
18-29	27%	50%	22%
30-49	35%	34%	29%
50-65	36%	28%	37%
Over 65	30%	30%	34%
Under 60K Income	31%	30%	37%
Over 60K Income	33%	41%	26%

Q10: Please indicate if you strongly agree, somewhat agree, somewhat disagree, or strongly disagree with the following statements: first, the chances of a child getting autism are increased if they receive the recommended childhood immunizations.

	<b>Strongly Agree</b>	<b>Somewhat Agree</b>	<b>Somewhat Disagree</b>	<b>Strongly Disagree</b>
Female	17%	10%	10%	52%
Male	21%	13%	7%	45%
No College Degree	18%	16%	9%	43%
College Degree	20%	6%	8%	54%
White	18%	9%	9%	51%
Person of Color	22%	18%	7%	40%
Catholic	22%	15%	11%	39%
Protestant	15%	10%	10%	48%
Non-Christian/No Religion	19%	9%	5%	55%
Democrat	14%	7%	8%	64%
Republican	23%	18%	11%	32%

Independent	25%	11%	1%	44%
18-29	12%	13%	5%	62%
30-49	17%	15%	10%	44%
50-65	25%	9%	9%	46%
Over 65	22%	9%	8%	44%
Under 60K Income	20%	13%	9%	44%
Over 60K Income	18%	11%	9%	53%

Q11: Immunizations pose little health risks to those that receive them.

	<b>Strongly Agree</b>	<b>Somewhat Agree</b>	<b>Somewhat Disagree</b>	<b>Strongly Disagree</b>
Female	46%	20%	10%	16%
Male	40%	21%	14%	16%
No College Degree	39%	24%	10%	16%
College Degree	48%	16%	14%	15%
White	47%	18%	12%	16%
Person of Color	34%	28%	11%	14%
Catholic	39%	19%	17%	16%
Protestant	45%	18%	12%	15%
Non-Christian/No Religion	45%	25%	8%	15%
Democrat	58%	15%	7%	15%
Republican	27%	26%	18%	19%
Independent	45%	23%	6%	7%
18-29	38%	31%	19%	9%
30-49	45%	22%	10%	15%
50-65	44%	17%	10%	16%
Over 65	44%	13%	8%	23%
Under 60K Income	38%	24%	11%	18%
Over 60K Income	48%	17%	12%	13%

Q16: How much trust do you have in Robert Kennedy Jr. to handle health care issues as Secretary of Health and Human Services?

	<b>A lot of trust</b>	<b>Some trust</b>	<b>Not too much trust</b>	<b>No trust at all</b>
Female	17%	13%	9%	46%
Male	22%	20%	13%	34%
No College Degree	23%	17%	10%	35%
College Degree	14%	17%	12%	48%
White	23%	15%	11%	39%
Person of Color	10%	20%	13%	42%
Catholic	25%	20%	14%	34%
Protestant	19%	16%	12%	38%
Non-Christian/No Religion	17%	13%	9%	44%

Democrat	4%	10%	10%	70%
Republican	35%	26%	10%	11%
Independent	22%	15%	16%	38%
18-29	12%	17%	19%	33%
30-49	19%	20%	9%	39%
50-65	20%	17%	10%	41%
Over 65	25%	12%	6%	47%
Under 60K Income	19%	16%	10%	40%
Over 60K Income	18%	18%	13%	42%

How much trust do you have in Robert Kennedy Jr. to handle health care issues as Secretary of Health and Human Services?  Level of agreement: the chances of a child getting autism are increased if they receive the recommended childhood immunizations.

	<b>Strongly Agree</b>	<b>Somewhat Agree</b>	<b>Somewhat Disagree</b>	<b>Strongly Disagree</b>
A lot of trust	32%	17%	9%	25%
Some trust	20%	21%	8%	33%
Not too much trust	9%	7%	13%	61%
No trust at all	15%	7%	7%	63%

How much trust do you have in Robert Kennedy Jr. to handle health care issues as Secretary of Health and Human Services?  Immunizations pose little health risks to those that receive them.

	<b>Strongly Agree</b>	<b>Somewhat Agree</b>	<b>Somewhat Disagree</b>	<b>Strongly Disagree</b>
A lot of trust	27%	24%	14%	22%
Some trust	29%	24%	20%	17%
Not too much trust	46%	33%	9%	5%
No trust at all	60%	16%	8%	12%

Which of the following best describes your current voting status? Are you registered as a:  President Trump's Executive Order withdrawing the United States from the World Health Organization was in the best interest of the health of American citizens.

	<b>Strongly Agree</b>	<b>Somewhat Agree</b>	<b>Somewhat Disagree</b>	<b>Strongly Disagree</b>
Democrat	8%	2%	4%	81%
Republican	46%	20%	5%	16%
Independent	18%	20%	3%	45%

Which of the following best describes your current voting status? Are you registered as a: X The United States withdrawal from the World Health Organization will negatively impact US preparedness for the next pandemic.

	<b>Strongly Agree</b>	<b>Somewhat Agree</b>	<b>Somewhat Disagree</b>	<b>Strongly Disagree</b>
Democrat	72%	13%	4%	5%
Republican	19%	9%	18%	42%
Independent	47%	7%	13%	16%